



*Giving Wings  
To Words*

UNDERWOOD  
• STANDARD •  
PORTABLE



**H**OW strange it is that in many modern homes where devices for saving time and labor are so plentiful, there still remains none but the old-fashioned, laborious means of writing—the pen.

Let swift keys replace the halting, tiring pen. Give freedom, speed and ease to writing. Make your words *wingéd* words—TYPED words!

The UNDERWOOD STANDARD PORTABLE enables anyone to do just that—to do Underwood Typewriting anywhere!

---

*The Machine You Will Eventually Carry*

---





A FAMOUS banker recently said, "I do all of my real thinking and planning outside of banking hours—and usually outside of the bank—at home."

In the quiet of his home, a man can really think and work. What medium

is better suited to record his ideas and plans than that on which he relies in business hours—*typewriting!*

Typewriting is writing minus drudgery; writing that soon becomes so nearly automatic that the mind is left free for clearer thought and more exact expression.

MANY a man finds that a short, uninterrupted session with his UNDERWOOD PORTABLE at home results in a better arrangement of his work next day, with perhaps an extra hour of leisure at the end.

Away from home—anywhere—this compact, reliable typewriter helps the traveler to communicate fluently and easily with his family and with his business associates.

---

*The Lightest Portable When Cased for Travel*

---



**R**EGARD it as you please, either as a household servant or as a social secretary! The UNDERWOOD PORTABLE makes the writing that every woman must do easier for her and more pleasant for her correspondent.

It helps to systematize the work of the home, it puts transactions with tradesmen on a business-like basis.

Typewritten instructions and orders are sure to be clearly understood, and their carbon copies form indisputable records for reference.

**W**OMEN of varied interests have been quick to welcome the typewriter for their social as well as for their business correspondence. They realize that the obvious good form and good sense of a typed note corrects the old-fashioned impression that a letter must be handwritten to be personal.

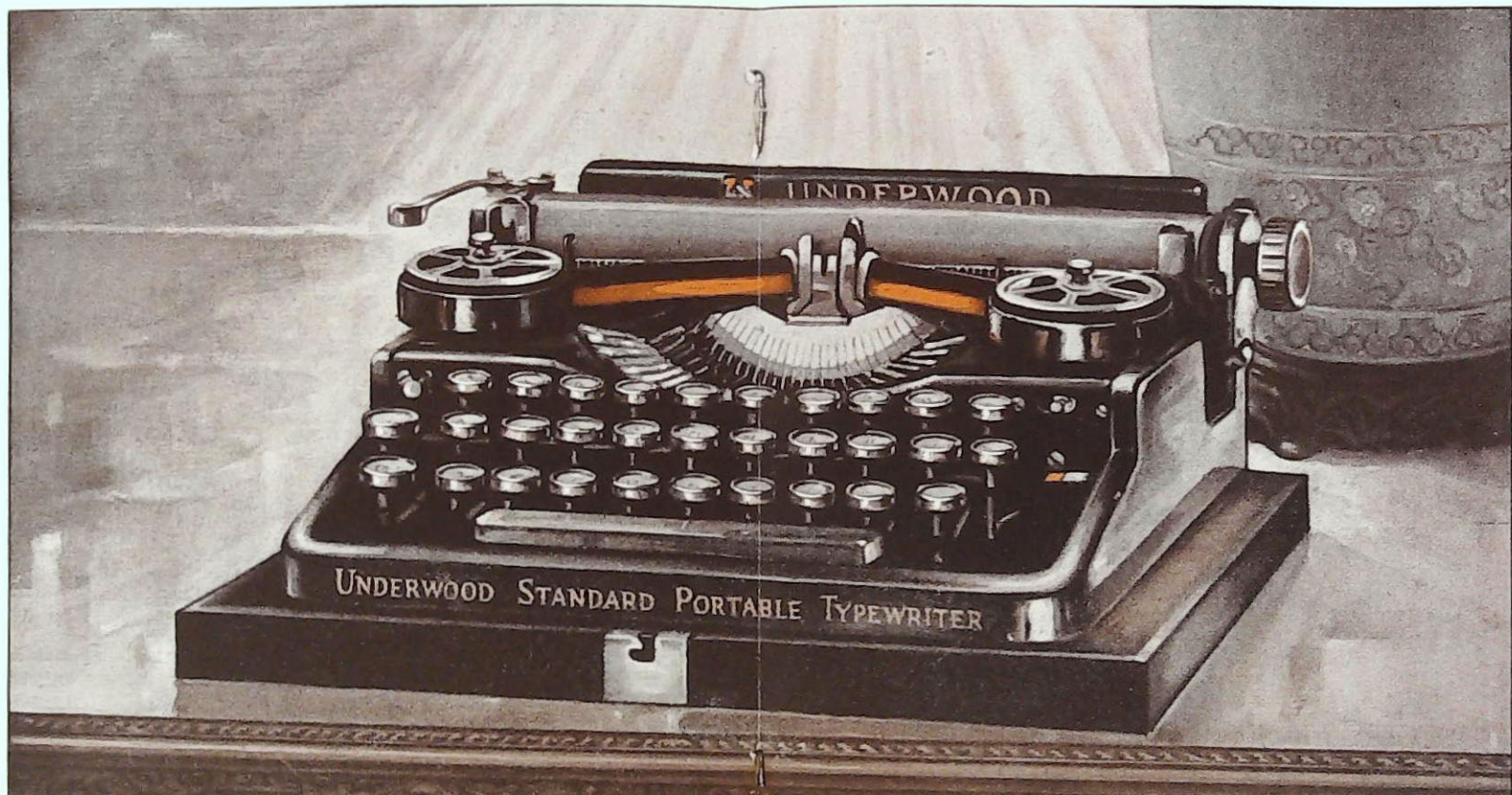
The UNDERWOOD PORTABLE, because of its beauty, its compactness, its ease and quietness of operation, removes the last objections to the typewriter in the home.

---

*The Machine You Will Eventually Carry*

---





UNDERWOOD · STANDARD · PORTABLE

"THE MACHINE YOU WILL EVENTUALLY CARRY"



**T**O the student at school or at college the ability to use a typewriter is becoming well-nigh invaluable.

Lessons and themes when typed are neater, more legible, and *sure to get the favorable attention of the instructor.*

Typewritten work is almost always more comprehensive, more carefully thought out. It is freed from the inevitable drudgery and obscurity of handwriting.

**N**O matter what the student's life work may be, the habit of recording his ideas in clear typewritten form will prove a permanently valuable asset.

The knack of using the UNDERWOOD PORTABLE is easily acquired. No instructions are needed except those given in the booklet accompanying the machine.

*Hint to parents of school and college students:*

A cure for carelessness in writing home may be an UNDERWOOD PORTABLE. It induces longer, more frequent letters.

---

*The Lightest Portable When Cased for Travel*

---



## The Construction of the Underwood Standard Portable

THIS Portable has behind it the experience, the facilities and the exclusive patents of the largest typewriter manufacturer in the world.

Most people will need to know only one thing about it to realize its excellence:— that it is of Underwood construction throughout; built on the same principles that have made the Underwood Typewriter the Standard writing machine of the world.

### *Weight and Size*

The UNDERWOOD PORTABLE weighs  $6\frac{5}{8}$  pounds. When cased, it is only  $4\frac{1}{2}$  inches high,  $12\frac{1}{8}$  inches long,  $9\frac{1}{4}$  inches wide, and weighs  $9\frac{1}{8}$  pounds, which makes it the lightest portable typewriter built.

### *The Convenient Carrying Case*

It takes hardly more than a click of the latch and a movement of the hands to case or uncase the UNDERWOOD PORTABLE. There is no fitting or fastening necessary.

### *Always Ready for Use*

The UNDERWOOD PORTABLE requires no unfolding or adjusting. When cover is removed, it is ready for instant use, either on the lap or wherever it is convenient for the writer.

### *Reduced Vibration and Friction*

The carriage rides on roller bearings, supplemented by ball bearings, assuring an extremely easy, smooth-running action.

The parts upon which the greater strain comes are supported and otherwise reinforced, resulting in strength and rigidity.

### *Lightness of Touch*

The touch of the UNDERWOOD PORTABLE is light and responsive. The individual key tension makes it possible to adjust the touch to suit the desire of the user.

### *Greater Speed*

By reason of the reduced friction in the carriage, escapement wheel and main spring, and the bevelled rigid "dog," the Underwood has greater speed and ease of operation than any other portable typewriter.



Weight, uncased, 6 $\frac{3}{4}$  lbs.; Cased, 9 $\frac{1}{4}$  lbs.  
Size, cased: 4 $\frac{1}{2}$  inches high; 12 $\frac{1}{4}$  inches long; 9 $\frac{1}{4}$  inches wide.

*The lightest Portable when cased for travel*

Obtainable at all Underwood Offices.

Sent prepaid to any part of the U. S.,  
fully guaranteed, on receipt of price.

Price \$50.00

**UNDERWOOD TYPEWRITER CO., INC.**

Underwood Building, New York

*Branches in all principal cities*



UNDERWOOD TYPEWRITER COMPANY  
311 TERRE HAUTE TRUST BUILDING  
TERRE HAUTE, INDIANA