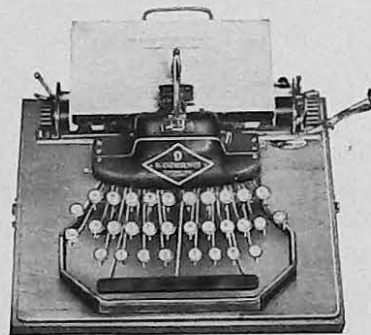


**New Visible
Blick Models**

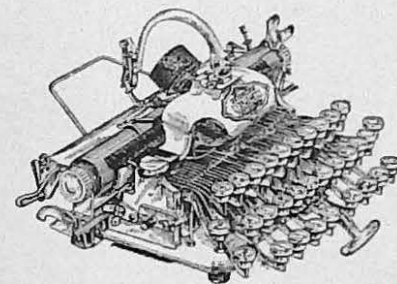
THE BLICKENSDERFER MANUFACTURING CO.



OUR GUARANTEE

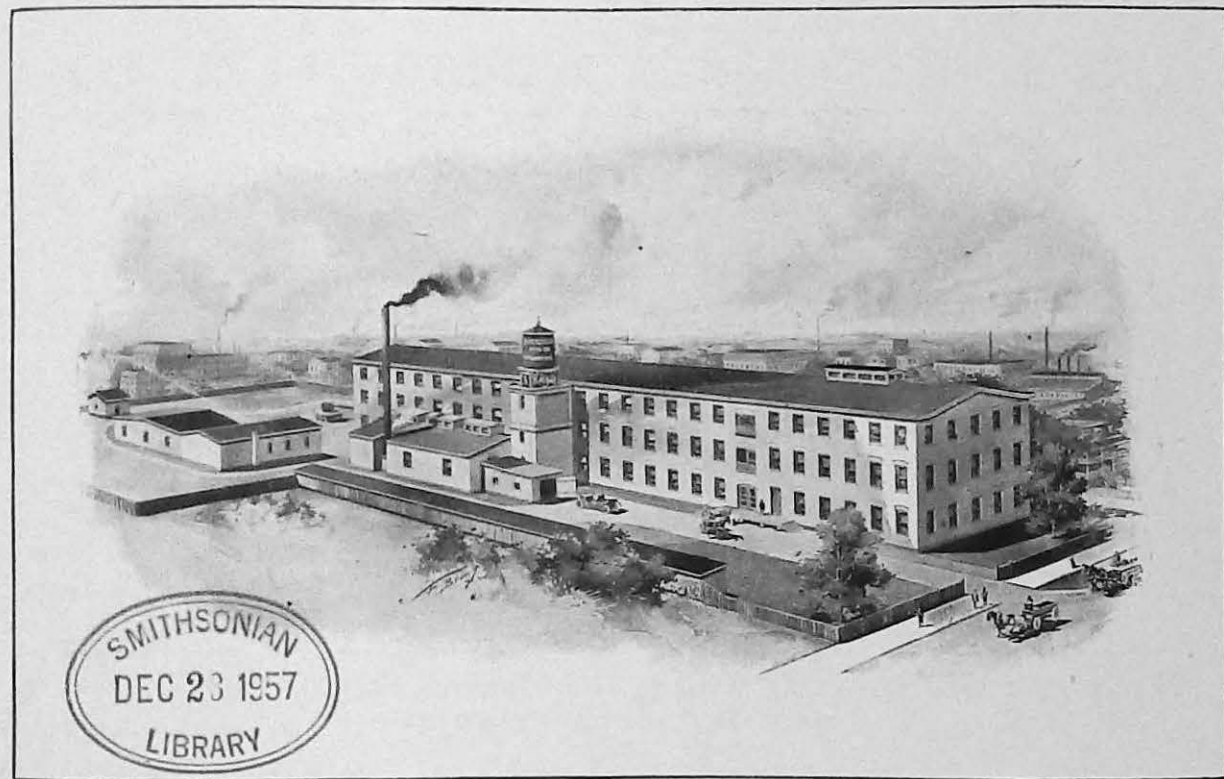
We warrant all our machines to be of good workmanship and material, and agree to furnish free within one year, any parts that may wear out or break, if not caused by misuse or neglect.

**THE BLICKENSDERFER
MFG. CO.**



EXECUTIVE OFFICE AND FACTORY : STAMFORD, CONNECTICUT, U.S.A.

⋄ ⋄ ⋄ ⋄ ⋄ ⋄ CABLE ADDRESS: "BLICK," STAMFORD ⋄ ⋄ ⋄ ⋄ ⋄ ⋄



REMAINE 24 OCT 1957

INTRODUCTION

QUOTING from previous Catalogues: The BLICK is well known: its advantages are apparent to the casual observer; thousands of users of this Writing Machine stand ready to testify to the general satisfaction it will render, in beautiful work, low cost of maintenance, quantity of work, and all around efficiency.

THE BLICK has been on the market for over twenty-five years, one of the first practical Writing Machines produced, and our constant aim and effort has been to improve from time to time; nothing being regarded too trivial to merit attention, no workmanship or materials too good to enter into its construction.

TODAY The BLICK is better known than ever, its exclusive points of merit have been established, where its friends were numbered by thousands, now are counted by hundreds of thousands: and in presenting our new Models, No. 9 and Featherweight Portable BLICKS, we have made good our claim of constant attention to every detail and improvement. Avoiding exaggerated, lengthy and unsubstantiated claims, the following pages will set forth the advantages of the BLICK and WHY IT SHOULD WARRANT YOUR CAREFUL INVESTIGATION BEFORE MAKING YOUR TYPEWRITER PURCHASE.



ADVANTAGES OF INTERCHANGEABLE TYPE

THE TYPE on all machines is the first of the expensive parts which must be replaced, and upon the condition of the type depends the quality of the work. BLICK typewheels last for years and can be replaced (by yourself—no expensive services of an expert mechanic necessary) for \$1.50 each. These are furnished in a large variety of styles, sizes and for the principal Foreign Languages. Use a large type for Bills, Orders; a medium size for your commercial correspondence, a small one for condensed work, a script for your personal letters. Interchangeable type is indispensable and a great advantage.

CORRECT CONSTRUCTION

SIMPLICITY: in construction necessarily means economy. By placing all the type on one cylinder, all in one piece, (positively obviating poor alignment and the numerous type bars with their multiple connections, as used by other machines) the advantage of the typewheel over the type-bar construction is very apparent. Less parts and wearing points; a strong, complete mechanism, manufactured of the best materials obtainable, with the greatest of skill and attention to each and every detail. Each BLICK passes through a most rigid test and inspection before leaving our thoroughly equipped factory, insuring each purchaser of a satisfactory machine.

LESS MAINTENANCE EXPENSE

DURABILITY: The BLICK will outwear and stand more use and abuse than any machine made. Using less than one-quarter the number of parts per machine, enables us to use better materials, (all our principal wearing parts are made of the best and toughest hardened steel, ground to a perfect fit) and fill the demand for a writing machine, complete for all classes of work, lighter in weight, more convenient in size, with less parts to wear, get out of order, causing expensive and troublesome repairs.

GREAT EFFICIENCY AND LABOR SAVING

EFFICIENCY: This is determined by the quality and quantity of work with the least amount of effort on the part of the operator, in the shortest possible time. The simple mechanical construction of the BLICK, with our latest up-to-date time and labor saving devices will enable the operator to accomplish more with the least possible effort.

VISIBILITY—INSERTIONS AND CORRECTIONS

NO TIME LOST: No carriage to raise to see your work, every letter and line in plain sight as soon as printed. If an error is to be corrected, an insertion to be made, our BLICK automatic indicator always points exactly to the printing point. No scales to figure, no uncertain line gauge, the automatic indicator saves time and permits neat corrections with speed.

SATISFACTORY, INTERCHANGEABLE AND ECONOMICAL INKING

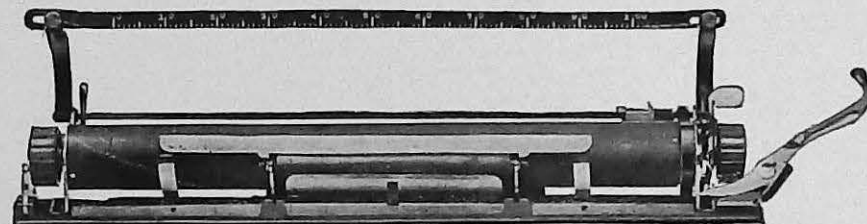
QUALITY OF WORK: Printers learned long ago, that there is only one way to obtain even inking—that is by rollers. The BLICK uses an ink roller, inking each type directly, resulting in beautiful clear impressions, equalled only by the printing press. These rolls are furnished in a variety of colors, both copying and record, and sold at a nominal price. Like the type, they are easily and quickly changed to conform with the taste and requirements of the operator. No troublesome ribbons to blur, tangle and wind—no complicated inking mechanism.

CARRIAGES FOR USE OF SPECIAL FORMS

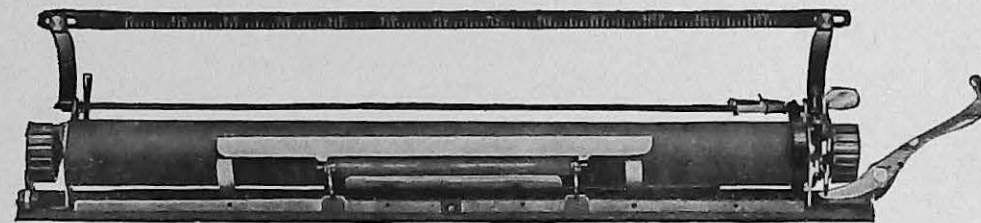
TWO MACHINES IN ONE: The BLICK has a free carriage, can always be turned forward or backward, or moved in either direction, without working against a heavy spring. These carriages are easily and quickly removed from the machine, in order to properly clean and oil, also we furnish for the BLICK No. 9 carriages for extra wide forms, which are interchangeable. The regular carriage furnished (unless extra width is specified) will accommodate paper 9 $\frac{3}{4}$ inches wide, and a long business envelope (No. 10). The extra width carriages (for which a small additional charge is made) will accommodate paper 12, 14 and 18 inches wide. A long carriage used for regular work is slow and awkward. With the BLICK No. 9, regular and long carriages are interchangeable, obviating the necessity of purchasing two machines, which is done by many.

LABEL WRITING

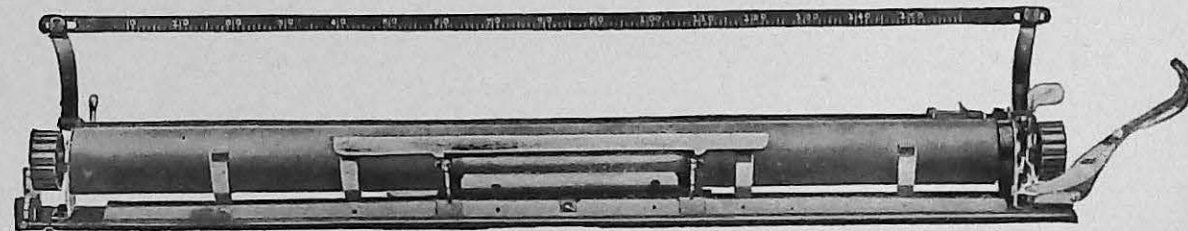
WE also furnish a Special Interchangeable Label Carriage for Card and Label work. Labels of all styles and sizes can be neatly and quickly written. Thousands of up-to-date Druggists are using The BLICK for their Prescription Labels.



12 INCH



14 INCH



18 INCH

CARBON WORK

AN ADVANTAGE: With this point the BLICK TYPEWHEEL system again predominates. Any one with a slight knowledge of mechanics will readily realize the direct blow of the typewheel is more powerful than can be obtained from a light type-bar. The BLICK produces with less force, more and a better grade of carbon copies than others. No faulty alignment from the typewheel in producing multiple copies continually.

STENCIL CUTTING

YOU CANNOT CUT WITH DULL TYPE: All type becomes rounded over when in use for a time. The BLICK TYPEWHEEL cuts the best stencil for the reason you only use it for Stencil Work and we furnish a special wheel in order that the best results will follow.

PORTABILITY

CONVENIENCE: The BLICK No. 9 is light in weight, can be operated any place, does not require a special desk or table and can be moved about. Authors, traveling salesmen, professional men and all who carry a machine will find it convenient in size.

NATURAL STROKE

EASY AND SIMPLE TO OPERATE: It is not necessary to strike or drive the keys of the BLICK with a nerve jarring stroke, with the end of the finger, where all nerves are centered. The BLICK and correct natural stroke is to press the keys against a light elastic resistance with the ball of the finger. No jerky, tiring, nervous shock or exhaustion, with dirty, blurred impressions. The BLICK stroke results in more and better work with less effort.

SOLD AT A POPULAR PRICE

A SAVING: One does not need to be an expert judge of writing machines, or does not require the expert judgment of an operator of the type-bar class of machines, in order to appreciate the advantages. ALL of which are to be found on NO other writing machine, MANY of which cannot be found on ANY OTHER. We guarantee the strength and durability of the BLICK and when it is considered the price is one half the price of its competitors, there is no longer room for any hesitation. Simple in operation—in construction, economical in maintenance, convenient in size and complete for all classes of work. YOU CAN PURCHASE A LARGER, MORE CUMBERSOME AND EXPENSIVE MACHINE, but YOU CANNOT BUY MORE THAN THE NEW VISIBLE NUMBER NINE BLICK.

Manufacturing Dept. M.



**SUMMARY OF IMPORTANT ADVANTAGES OF THE BLICKENSBERGER NO. 9
THE DECIMAL TABULATOR**

IS a part of this machine and furnished without extra charge. Can be operated rapidly and is a great time saver in making out bills, statements, and all tabulating work.

THE BACK SPACER

WITH the back spacer the carriage is automatically operated backward, or directly opposite to its regular direction of travel. The back spacer saves time and labor, simplifies insertions or omissions, makes corrections easy and increases the efficiency of the operator.

THE PAPER RELEASE

ANOTHER important feature of the No. 9 Machine. The paper can be released by merely pressing down the paper release arm at the left end of the carriage, which will leave the paper perfectly free to shift or adjust as may be required.

INTERCHANGEABLE TYPE

MANY kinds of type can be used on this machine. The type-wheel is quickly changed by the writer. It enables the operator to use different styles of English type on the same machine, and also type for any of the principal foreign languages, when desired. Only those who have used a machine of this kind can fully appreciate the great advantage of having a typewriter of this class.

AUTOMATIC AND VARIABLE LINE SPACING

WHEN the carriage is returned to the right, it spaces automatically for the next line, adjustable to ruled paper or any desired width between the lines.

AUTOMATIC POINTER

IN writing a letter the operator first inserts the date. It is unnecessary with this machine to consult a scale or lift the carriage to see where to begin to print. The automatic pointer which is in plain sight, always indicates the line of printing and the exact point at which the impression will appear.



SUMMARY OF IMPORTANT ADVANTAGES OF THE BLICKENSDERFER NO. 9 ALARM BELL

THE Alarm Bell is attached to the base of the machine and can be set to ring where desired by merely sliding the bell trip to the place wanted.

THE RIGHT HAND MARGINAL LOCK AND RELEASE

THE automatic Action Stop, locks the action a few letters after the alarm has sounded, thus securing a clear right-hand margin. If additional letters are required to finish a syllable or word, a touch of the finger releases the action, and the lock is left in adjustment for the next line.

LEFT HAND MARGIN

THE margin at the left hand of the sheet can be adjusted to any width by pressing the margin stop in and sliding it to the desired point on the rod, no set screws to remove, no fixed limits, but instantly adjusted.

MARGINAL NOTES

IF the operator desires to insert marginal notes by lifting the latch as he returns the carriage, he can pass the margin without disturbing the adjustment of the margin stop.

FREE ROLLER BEARING CARRIAGE

IT has a free adjustable roller bearing carriage. This enables the operator to run forward or backward and move either to the right or to the left, to make corrections without pulling against a heavy spring, as many of the others.

VISIBLE WRITING

ON this machine no time is lost in raising the carriage to examine the work. The writing is in plain sight, enabling the operator to detect mistakes at once without lifting the carriage or turning the platen.

KEY-BOARD

A FEW FACTS CONCERNING THE BLICKENS DERFER SCIENTIFIC KEY-BOARD

THE letters most used are **nearest** the operator. Seventy per cent. of all work is done on the lowest bank of keys. Almost all word endings are close to the space bar. Frequent combinations of letters are close together. The hands travel over the least possible distance.

A study of the adjoining cuts of the two arrangements, the Blickensderfer and the so-called Universal, will show at once the contrast between these two systems.

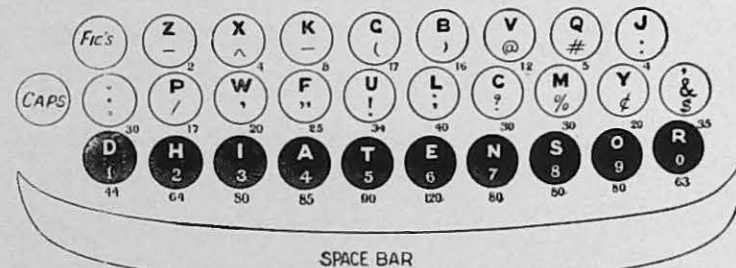
ON THE UNIVERSAL

THE letters most used are **farthest** from the operator. The greatest amount of work is done on the upper bank of the keys. Word endings are farthest from the space bar. Letters coming in frequent combination are widely scattered. It would be difficult to design a key-board over which the hands must travel farther.

TO the purchaser who has not been accustomed to the Universal Key-board these facts are sufficient to convince him that not only is our Scientific arrangement more convenient and less tiring to operate but that far greater speed can be obtained on it than on any other. To the operator who has become proficient on the old style machines and who hesitates to change, it is perhaps necessary to call attention to the fact that the Scientific Key-board can be memorized quickly and high speed attained.

Comparison Between the Blickensderfer "Scientific" and "Universal" Key-Boards

Blickensderfer Scientific Key-Board

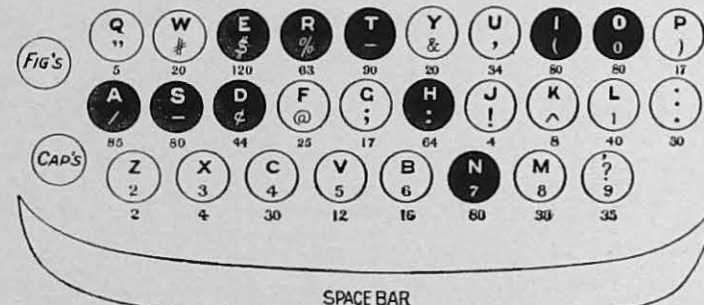


	Percentage of Letters Used	Percentage of Words Used
Upper Bank	6%	2%
Middle Bank	24%	13%
Lower Bank	70%	85%

Upper Bank 6% 2%
 Middle Bank 24% 13%
 Lower Bank 70% 85%

Space Bar Used One Stroke in Five

Universal Key-Board



	Percentage of Letters Used	Percentage of Words Used
Upper Bank	47%	44%
Middle Bank	32%	46%
Lower Bank	21%	21%

Space Bar Used One Stroke in Five

Three-quarters of the Work is Done on the Black Keys

Scientific Keyboard.

Elite No. 365. Code Word—Tinkle.

zxkg.pwfudhiatensorlcmj,bvqj
ZXKG.PWFUDHIATENSORLCMY&BVQJ
-^_(./'!"!1234567890;?%e\$)@#:

Small Roman No. 407. Code Word—Table.

zxkg.pwfudhiatensorlcmj,bvqj
ZXKG.PWFUDHIATENSORLCMY&BVQJ
-^_(./'!"!1234567890;?%e\$)@#:

Large Roman No. 409. Code Word—Tabby.

zxkg.pwfudhiatensorlcmj,bvqj
ZXKG.PWFUDHIATENSORLCMY&BVQJ
-^_(./'!"!1234567890;?%e\$)@#:

Italic No. 440. Code Word—Terrace.

zxkg.pwfudhiatensorlcmj,bvqj
ZXKG.PWFUDHIATENSORLCMY&BVQJ
-^_(./'!"!1234567890;?%e\$)@#:

Script No. 499. Code Word—Timid.

zxkg.pwfudhiatensorlcmj,bvqj
ZXKG.PWFUDHIATENSORLCMY&BVQJ
-^_(./'!"!1234567890;?%e\$)@#:

Narrow Roman No. 455. Code Word—Tetter.

zxkg.pwfudhiatensorlcmj,bvqj
ZXKG.PWFUDHIATENSORLCMY&BVQJ
-^_(./'!"!1234567890;?%e\$)@#:

Large Narrow Roman No. 457. Code Word—Topaz.

zxkg.pwfudhiatensorlcmj,bvqj
ZXKG.PWFUDHIATENSORLCMY&BVQJ
-^_(./'!"!1234567890;?%e\$)@#:

Mimeograph No. 474. Code Word—Turn.

zxkg.pwfudhiatensorlcmj,bvqj
ZXKG.PWFUDHIATENSORLCMY&BVQJ
-^_(./'!"!1234567890;?%e\$)@#:

Small Roman No. 362. Code Word—Tease.

zxkg.pwfudhiatensorlcmj,bvqj
ZXKG.PWFUDHIATENSORLCMY&BVQJ
-^_(./'!"!1234567890;?%e\$)@#:

Large Roman No. 374. Code Word—Trait.

zxkg.pwfudhiatensorlcmj,bvqj
ZXKG.PWFUDHIATENSORLCMY&BVQJ
-^_(./'!"!1234567890;?%e\$)@#:

Universal Keyboard.

Small Roman No. 406. Code Word—Torment.

qwertasdfgzxcvbnm,hjkl.yuiop
QWERTASDFGZXCVBNM?HJKL.YUIOP
"#\$_/-e@;23456789;!^1.&'(0)

Large Roman No. 418. Code Word—Tornado.

qwertasdfgzxcvbnm,hjkl.yuiop
QWERTASDFGZXCVBNM?HJKL.YUIOP
"#\$_/-e@;23456789;!^1.&'(0)

Italic No. 497. Code Word—Tractable.

qwertasdfgzxcvbnm,hjkl.yuiop
QWERTASDFGZXCVBNM?HJKL.YUIOP
"#\$_/-e@;23456789;!^1.&'(0)

Script No. 304. Code Word—Trap.

qwertasdfgzxcvbnm,hjkl.yuiop
QWERTASDFGZXCVBNM?HJKL.YUIOP
"#\$_/-e@;23456789;!^1.&'(0)

Elite No. 325. Code Word—Tempest.

qwertasdfgzxcvbnm,hjkl.yuiop
QWERTASDFGZXCVBNM?HJKL.YUIOP
"#\$_/-e@;23456789;!^1.&'(0)

Small Roman No. 364. Code Word—Tithe.

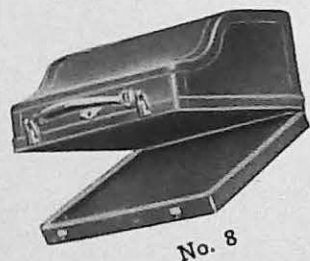
qwertasdfgzxcvbnm,hjkl.yuiop
QWERTASDFGZXCVBNM?HJKL.YUIOP
"#\$_/-e@;23456789;!^1.&'(0)

Nearly 200 different varieties of type are used on the Blickensderfer Typewriters, embracing all of the principal languages. We show in this catalogue only the different styles of type in general use on the English machine. Styles of type for foreign languages will be furnished upon application.

Typewheels with special, in place of regular characters, can be furnished at a cost of fifty cents per special character, in addition to the regular price, when so ordered.

LEATHER TRAVELING CASES

For No. 9 Model.



No. 8

- No. 8 Case, \$8.00
- No. 9 Case, 9.00
- No. 10 Case, 11.00



No. 10

Cases Nos. 9 and 10 have pocket for Stationery

EQUIPMENT FOR NO. 9

Free of Charge

Handsome Polished Wood Case,
Two Styles of Type,
Supply of Ink Rolls,
Tools and Instructions.



No. 9

YOUR CHOICE OF KEY-

BOARDS

BLICK—SCIENTIFIC

or

STANDARD

NET CASH PRICES

BLICK No. 9—Scientific or Universal Key-Board.....	\$60.00
BLICK No. 9—with 12 or 14 inch carriage	65.00
BLICK No. 9—with 18 inch carriage	75.00
BLICK Featherweight, (See Special Catalog)	50.00
Extra Carriages { 9 3/8 inches	5.00
{ 12 and 14 inches	10.00
{ 18 inches	15.00
Special Label and Card Writing Carriage	5.00
Type-wheels, all styles, each	1.50
Ink Rolls, per bottle (6),..... .40 two bottles (12)75
Carbon Paper, per dozen sheets50

Send for samples and price list of Typewriter paper.

PLEASE NOTE:

When Machines are sold on monthly payments an additional charge is made.

Featherweight Five Pound Portable Model, all Aluminum and Steel, fully described in separate catalog.

AGENCIES IN ALL THE PRINCIPAL CITIES.



THE SUMMING UP

To sum it up, The Blickensderfer Typewriter possesses all of the important features of the high priced typewriters, with surpassing strength, reliability, speed, action, and permanent excellence of work, at a much lower price than any other typewriter of the same high grade and merit.

The Blickensderfer Mfg. Co.

Executive Office and Factory:
STAMFORD, - - - CONN.



