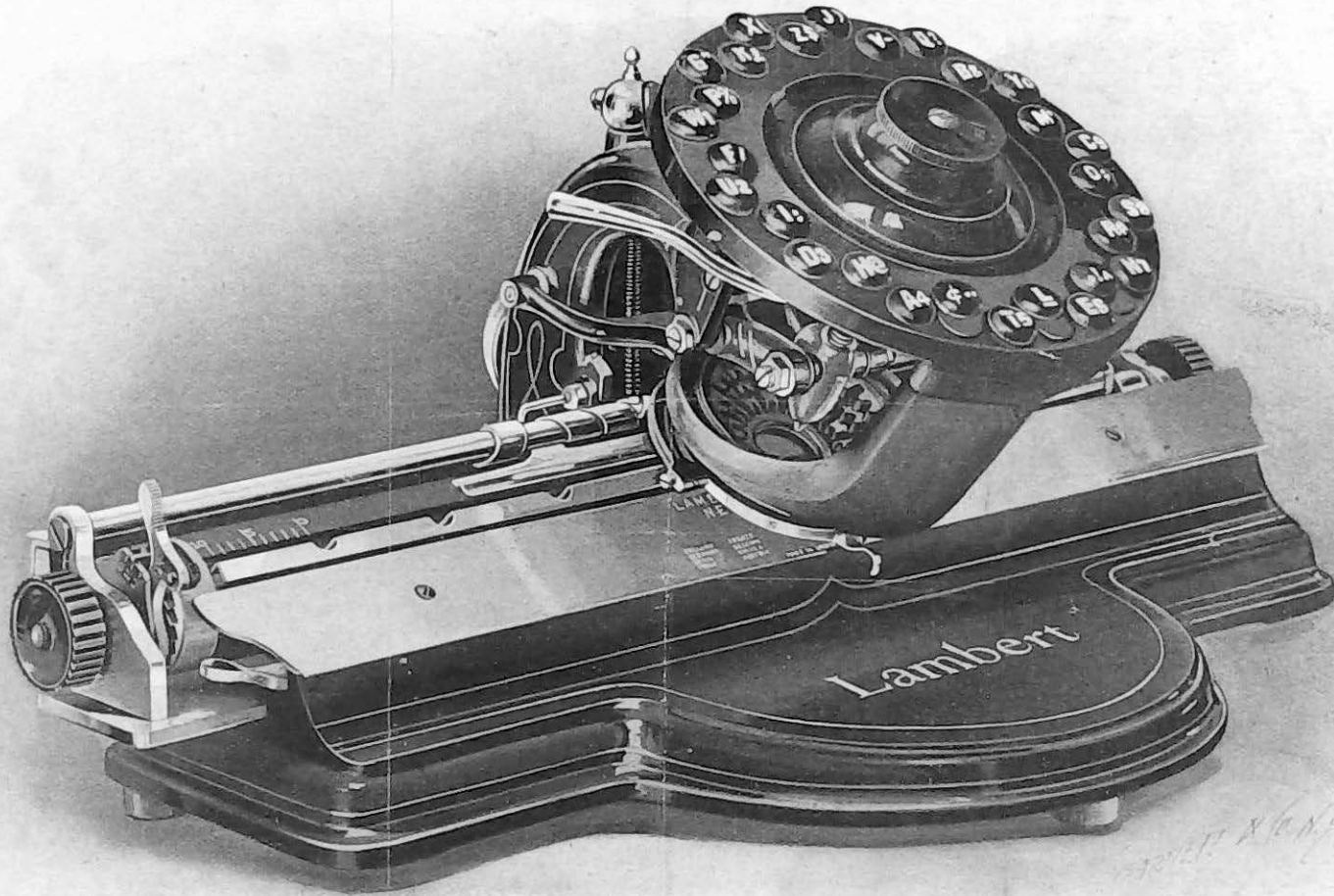


LAMBERT TYPEWRITER — ANYBODY CAN OPERATE IT



Weight, 6½ Pounds.

NEW MODEL No. 3. **\$20.** IN HANDSOME OAK CASE. TAKES PAPER UP TO 10¼ INCHES WIDE. OPERATES WITH BOTH HANDS. KEYBOARD DOES NOT REVOLVE

LAMBERT TYPEWRITER COMPANY,

1274 BROADWAY, NEW YORK.

86 LA SALLE STREET, CHICAGO.

SELF-INSTRUCTOR LAMBERT TYPEWRITER

MODEL No. 3



LAMBERT TYPEWRITER COMPANY,

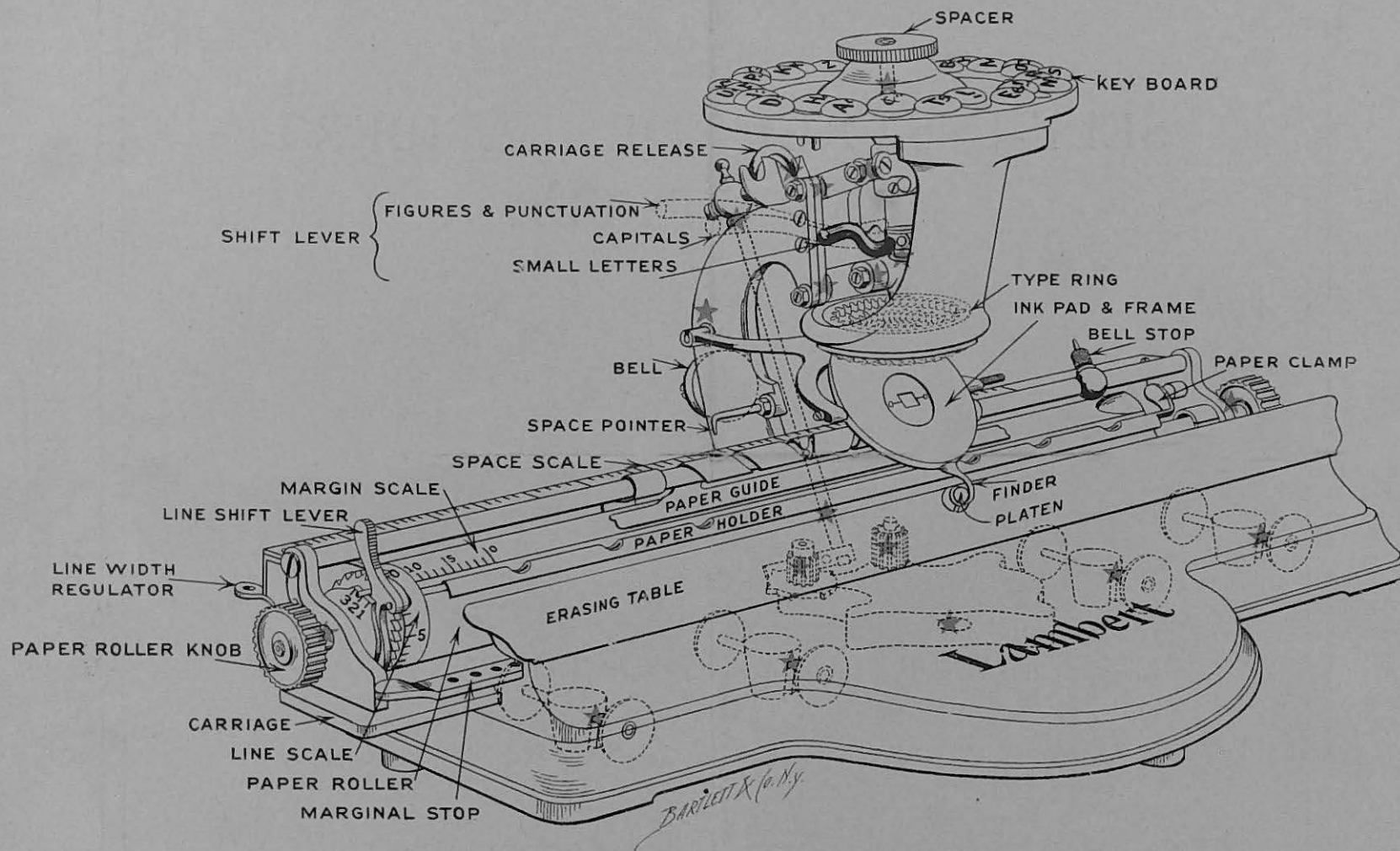
Salesrooms

1274 BROADWAY, NEW YORK 86 LA SALLE STREET, CHICAGO

Factory

45 AND 47 YORK STREET, BROOKLYN

WORKING DRAWING SHOWING PARTS AND OILING POINTS OF LAMBERT TYPEWRITER



WEIGHT 6½ POUNDS. TAKES PAPER AND ENVELOPES 10¼ INCHES WIDE. CLEAN UNDER SPACER CAP EACH DAY. OIL OCCASIONALLY WHERE RED STARS SHOW

PARTS AND THEIR USES

SPACER—Used in spacing between words and moving carriage short distances.

KEYBOARD—Should be operated with full piano touch and both hands.

CARRIAGE—Moves to the left with each escapement. To commence new line, press line-shift lever up firmly with left thumb (the first finger resting on paper-roller knob) and push carriage hard to the right.

CARRIAGE RELEASE—Push to the left to open escapement, allows carriage to travel freely on track in both directions. In using release receive carriage with left hand.

PAPER CLAMP AND HOLDER—To insert paper push paper clamp to the right. Slip top edge of paper in holder; the six holes show when top edge is straight. Push paper clamp to the left until paper is firmly held.

PAPER GUIDE—Keeps paper running evenly on roller.

MARGIN SCALE—This gives width of left-hand margin; one inch at ten from edge of paper, half-inch at five, etc.

MARGINAL STOP—Regulates left-end margin as desired, over one inch. Lift up and pull to edge as far as desired.

LINE-SHIFT LEVER—Feeds paper on roller.

LINE-WIDTH REGULATOR—When set regulates distance between writing line either 1, 2 or 3 spaces apart.

PLATEN OR PRINTING BLOCK—Where type must always strike. When tops of letters do not print unscrew and replace with new platen.

FINDER—Determines the location of letters and characters on the paper when pressed down. To adjust, write the letter "1" and then bend finder so that it touches bottom of letter.

ERASING TABLE—Permits erasing of errors on either side of platen.

SHIFT LEVER—Regulates change between small letters, capitals, figures, etc. Pull forward for small letters, center for capitals, back for figures and characters.

TYPE-RING—Prints when full stroke is given on keyboard. Remove by loosening small screw at back and pressing down and out after ink-pad frame has been removed.

INK-PAD AND FRAME—Remove pad and frame by pressing down from pins it rests against. Replace over holding spring and under pins it rests in. Remove ink-pad from frame by unscrewing the small knurled screw at the right. When replaced ink-pad should swing freely in frame.

BELL—Gives warning of approach of the end of writing line.

BELL STOP—Governs right-hand margin. Eight spaces after the warning bell stops the machine.

LINE SCALE—Shows location of writing line on successive sheets.

SPACE-SCALE AND POINTER—Registers escapement of letters, figures and signs.

PAPER ROLLER—This holds and rolls the paper.

PAPER-ROLLER KNOB—Always pull the paper out with the left hand, lessening the friction by turning the right-hand paper-roller knob towards you at the same time.

CHANGEABLE PART OF KEYBOARD (Letters H to R inclusive)—Held by latches underneath. Remove when changing type-ring for one of different characters or foreign languages.

CARE—When machine is not in use it should be kept in case or covered.

OILING—All oiling parts are marked by a *red star*. Use sperm or any other light machinery oil. Never use more than one drop at a time. A machine in full use requires frequent oiling. A machine in occasional use not so much. The keyboard under spacer should be cleaned, and wiped with oily cloth frequently. Pull spacer up and clean underneath.

CLEANING—The machine must be wiped thoroughly after oiling and frequently gone over and rubbed up. Never use a cloth containing lint. Cheese-cloth is the best.