

1885

"It Stands ^{AT} THE HEAD"



Manufactured by

THE AMERICAN WRITING MACHINE CO.

HARTFORD
CONN. USA

W. M. BELCHER & CO.

General N. E. Agents,

36 Bromfield St.

BOSTON.

Presented by

TUTTLE-N

THE CALIGRAPH.

OUR WRITING MACHINES FOR 1885.

OUR customers will find in this circular the first public announcement of some very valuable and important improvements which we have recently brought out. It is a pleasure to us to be able to show this progress; we consider it but a fair return for the hearty support we have received, and we would have been far from satisfied if we could only have shown that we were making the old better.

Although the past year has been one of great business depression, our own trade has shown a gratifying increase; this prosperity has enabled us to keep the works constantly running, and has encouraged us to add largely to our already fine plant of machinery and special tools.

We have unusual facilities for producing fine work, and the "Caligraphs" we are now offering show that we are using these facilities to the best advantage.

THE PRICES ARE STILL IN OUR FAVOR.

THE CALIGRAPH.

—THE—

IMPROVED TYPE-BAR.

THE Caligraph is now fitted with our new Patent Steel Type-bar. By referring to the illustrations it will be seen that this bar is struck up from sheet steel. This bar embodies the principle used in making the parts of bicycles and other fine machines where great strength must be combined with lightness. This bar will resist more strain than a solid steel one of like dimensions, and, of course, its extreme lightness materially adds to the speed of the machine.

NEW TYPE-BAR HANGER.

We have always given our customers an adjustable journal for the type-bar. A little wear at this bearing causes great vibration at the end of the bar, and the ability to take up such wear will account



for the almost perfect alignment of our old instruments when in the hands of intelligent users. We now offer an improved bearing (see illustration,) whereby the adjustment is stable and in direct line with the wearing points.

THE CALIGRAPH.

No. 1.



Weight, with Office Case, - - -	17 lbs.
Weight, with Traveling Case, - - -	20 lbs.
Price, with Office Case, - - - -	\$70 00
Price, with Traveling Case, - - - -	\$77 50

THIS SHOWS THE APPEARANCE OF WORK DONE ON THE No. 1 CALIGRAPH, FITTED WITH SMALL GOTHIC TYPE. FOR SPECIMENS OF ACTUAL WRITING, APPLY TO OURSELVES OR OUR AGENTS.

Every Instrument is Fully Warranted.

Detailed description will be found on the next page.

Above prices are for prompt cash; if time is given, a corresponding advance will be made.

THE CALIGRAPH.

No. 1 CALIGRAPH.

THIS Instrument contains 48 characters, which include a complete set of Capital Letters, Numerals, Punctuation Marks, the characters "\$," "&," and an Underscore for capitalizing or emphasizing.

The arrangement of the key-board is as follows:

2	3	4	5	6	7	8	9
— Q \$ (& Z)							
W	T	R	E	Y	U	I	O
A S D F G H C K							
J	X	V	B	N	L	M	P
? : ; ' " . , —							

These machines are made of the best material obtainable, and with the same care and thoroughness as are our No. 2's. They receive paper 9 inches wide, and write a line 7 inches long. We fit them all with every improvement, including those mentioned on page 3. We have no hesitancy in recommending these instruments as being the most compact and serviceable single case writing machines offered.

THEY ARE ADJUSTABLE FOR WEAR.

ALL BRIGHT PARTS ARE NICKEL-PLATED.

THE CALIGRAPH.

No. 2.



Weight, with Office Case, - - -	23 lbs.
Weight, with Traveling Case, - - -	26 lbs.
Price, with Office Case, - - -	\$85 00
Price, with Traveling Case, - - -	\$92 50

This shows the appearance of work done on the No.2 Caligraph, fitted with small Roman Type. For specimens of actual writing, apply to ourselves or our Agents.

Every Machine is Fully Warranted.

Detailed description on next page.

Above prices are for prompt cash; if time is given, a corresponding advance will be made.

THE CALIGRAPH.

No. 2 CALIGRAPH.

THIS Machine has 72 keys, giving complete sets of Capitals and lower-case letters, the Numerals, the characters, "&," "\$" and the punctuation marks. The arrangement of the key-board is as follows:

V W 2 3 4 5 6 7 8 9 J K
R T E (\$ q & z) U G H
A S w t r e y u i o I O
D F a s d f g h o k N L
B C j x v b n l m p M P
Q X ; ; ' ? " . , - Y Z

This is the only double-case machine of its class, which prints each character at a single finger stroke; it is designed to write two cases with the same movement that produces corresponding matter on single-case machines, the labor of shifting the carriage for each upper-case character being overcome in this simple and complete instrument. It is made as nearly perfect as the best American machinery and workmen can produce it.

All Parts are Interchangeable and Bearings are Adjustable.

All Bright Parts are Nickel-Plated.

THE CALIGRAPH.



THE No. 2 WIDE CARRIAGE.

The No. 2 Wide Carriage is similar to the No. 2 described on the preceding page, except that it is provided with a carriage which takes in a sheet of paper 11½ inches wide and writes a line 9¼ inches long. It is found convenient for use in tabulating work where several columns are to be transcribed. For general use the ordinary width is preferable. Price, \$90.00.

THE No. 2 COMMERCIAL.

This instrument is invaluable for billing purposes as well as a general office machine in many lines of trade.

It is fitted with all Cap type like the No. 1; ten of the twenty-six keys representing capital letters in the ordinary No. 2 Caligraph are here utilized for an extra and smaller set of figures, so that any fraction may be made, thus. 33⅓, 12½.

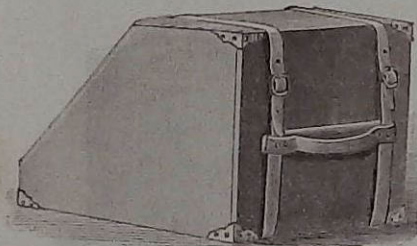
The other sixteen keys are used for business signs and characters, as @, %, =, £.

A machine of this style, fitted with large Gothic type, also answers well for general correspondence. Price, \$85.

SPECIAL MACHINES.

Without extra charge we can fit up machines with Russian type, or with the proper accent marks for writing French, Spanish or German. We have also on hand characters for the fractions, ounce, scruple, drachm, pound sterling and others, covering everything that any one would be apt to want.

THE CALIGRAPH.



OFFICE CASE.

Free with each new machine, - Price, \$3.00.

SUPPLIES

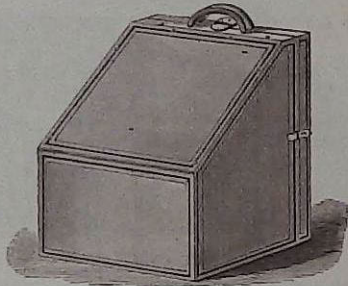
May be obtained wherever our instruments are kept for sale, and usually the quality of such will be found of the best. Ribbons suitable to copying in letter press, non-copyable ribbons and ribbons inked for transfers by Hektograph process are sold at 75 cents each. One ribbon accompanies each machine, and in ordering state whether for Letter Press copying or not. Black or purple, copyable and black record ribbons are recommended.

HOW TO ORDER.

Please state distinctly the style of machine and type you wish. If you are in business and have good commercial rating, the machine will be forwarded, subject to remittance by yourself or draft at three days' sight on the first of the following month. If not in trade, we can ship C. O. D., but would respectfully request \$10.00 with order to insure acceptance.

With each machine is included an Office Case, Screw-driver, Reel for changing ribbons, Pin for adjusting the alignment, and Book containing full instructions for proper operation and care of machine.

THE CALIGRAPH.



TRAVELING CASE.

Price, - - - - - \$7.50.

These cases are now much more strongly made and are of better material.

TYPES AND SPECIMENS.

We offer in No. 1 machines a selection from four styles of types, viz.: Large and small Gothic, and large and small Roman. In No. 2 machines, three styles, viz.: Large and small Roman and Italic.

Specimens of writing showing all of these styles, and being the actual work of the instruments, will be cheerfully sent on application.

HISTORY.

The invention of the "Caligraph" was worked out during the year 1879. Little was done in the way of making machines until 1881, and since then we have made and sold more than 9,500.

TELEGRAPHIC CODE.

NO. 1.	LARGE ROMAN, WHEAT.	SMALL ROMAN, CORN.	LARGE GOTHIC, RYE.	SMALL GOTHIC, BARLEY.
NO. 2.	LARGE ROMAN, APPLE.	SMALL ROMAN, PEAR.	ITALIC, PLUM.	COMMERCIAL, FRUIT.
				WIDE CARRIAGE, TREE.

Example: "Express one Pear Tree," signifies:

Express one No. 2 Small Roman, Wide Carriage Caligraph.

Cable Address: "CALIGRAPH."

WORLD'S

EXPOSITION,



NEW ORLEANS,

1885.

New Orleans World's Fair, June 10, 1885.
"To whom it may concern:
"The 'Caligraph,' manufactured by the American Writing Machine Company, received the medal."
"L. D. GARROLL, Department of Awards."

"To whom it may concern:

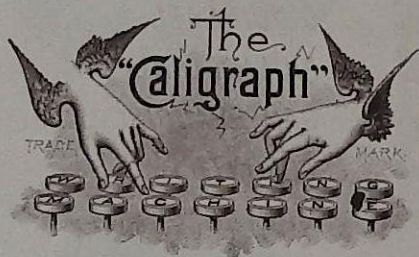
"The 'Caligraph,' manufactured by the American Writing Machine Company, received the medal."
"L. D. GARROLL, Department of Awards."



THE CALIGRAPH.

In 1884 the "Caligraph" was awarded FIRST Premiums at the following Fairs and Expositions:

CINCINNATI,
PHILADELPHIA,
SAN FRANCISCO,
TORONTO,
MONTREAL,
OTTAWA,
WHEELING,
PORTLAND,
BOSTON.



TESTIMONIALS.

We do not crowd the pages of this trade circular with letters of recommendation, but we print a pamphlet especially devoted to them, and containing a large number of the most influential character. These pamphlets will be mailed to interested parties free on application.

LIFE is too SHORT to write the OLD WAY.



“The Caligraph”