

NEWMAN & SON,  
General Agents,

“Caligraph”

605 Seventh Street,  
WASHINGTON, D. C.

## Contents.

	Page.
Writing Machines, . . . . .	3-5
Caligraph Special No. 3, . . . . .	6, 7
Caligraph No. 2, . . . . .	9
Caligraph No. 1, . . . . .	11
Key-boards, . . . . .	13
Special Machines, . . . . .	10, 12
Export Business, Etc., . . . . .	14, 15
Telegraph Code, . . . . .	20
Styles of Type, . . . . .	18, 19
Furniture and Drop Cabinets, . . . . .	21-28
Ribbons, Carbon, Paper, and Supplies, . . . . .	29-36

# The "CALIGRAPH."

Writing Machine Desks and Drop  
Cabinets.

LINEN PAPERS AND SUPPLIES.

MANUFACTURED BY

THE AMERICAN WRITING MACHINE CO.,

FACTORY AND GENERAL OFFICE,

HARTFORD, CONN., U. S. A.

BRANCH OFFICE AND FACTORY,

COVENTRY, ENGLAND.

BRANCH OFFICES:

237 BROADWAY, NEW YORK.

1003 ARCH ST., PHILADELPHIA.

14 WEST 4TH ST., CINCINNATI.

OUR GOODS ARE SOLD BY LOCAL DEALERS IN ALL  
PARTS OF THE WORLD.



WE will place the Caligraph on trial, free of charge, in any office, in competition with other typewriters, on any kind of work.



## Writing Machines.

IN the purchase of a writing machine there are a number of important points to be taken into consideration. Among the most prominent are those of SPEED, CONSTRUCTION, and DURABILITY. The Caligraph is the only typewriter that can truthfully lay claim to the fullest possession of all these features.

### Speed.

In order to attain a high rate of speed upon the writing machine, it is necessary to become almost mechanical in its operation. When once the operator has become thoroughly familiar with the key-board, his fingers should touch the required key, as each letter comes into his mind, without any conscious effort of his mental powers, just as the hand of the blind musician goes mechanically to the desired key of his piano. In the Caligraph this is possible; in other machines it is not. In the Caligraph a single touch of the finger makes any character, and the key-board is a positive index to the character written. The keys are banked low and on a level, so that the hands may pass easily from one to another. On other machines two fingers and three movements of the hands are necessary to produce any capital or punctuation mark, with the consequent loss of the use of one hand.

## Durability.

THIS is an important consideration, as writing machines are expensive and subject to continuous use, and in this respect we claim the Caligraph is far ahead of all competing machines. Its type bars are adjustable, and in event of any lost motion in the journals, it can be taken up instantly. NO OTHER MACHINE POSSESSES THIS UNQUESTIONED ADVANTAGE. The paper feed bands on the Caligraph are tempered steel and always adjustable, a great improvement over machines using rubber bands for this purpose. The type also strike on a flat surface, instead of round, producing a better impression.

We would be pleased to have prospective purchasers ask the opinion of a skilled mechanic as to the relative merits of the Caligraph on all points relating to its mechanical construction, durability, etc., when compared with other instruments of its class.

The Caligraph will stand harder usage and more wear and tear than any other typewriter, and at the same time do better work and require less adjustment or repair.

We will be glad to furnish inquirers with any desired information in regard to the Caligraph, and we trust, when in the market for a writing machine, you will, at least, call and examine our instruments.

## Superior Advantages of the Caligraph Summarized.

EASIEST, STEADIEST, and LEAST key depression in writing. Level key-board. Separate key for each character, and no "shift." Avoiding injurious striking with ends of fingers, as in deep and hard touch machines. Printing on flat surface instead of round. Equalized leverage from keys to type, combining least wear and strain. Most perfect paper carriage, only seven ounce lifting weight, moves steadily. No oscillation in rapid work.

Patent adjustable type-bars of uniform length, giving durability, manifolding power, and even impression of type. Writes on paper from one inch wide and upwards. Operated most rapidly, and with least fatigue and noise. LEAST COMPLI-CATED. Most portable. Malleable instead of cast-iron frame. Unsurpassed workmanship. Made by the American Writing Machine Co., Hartford, Conn., in the most perfectly equipped factory in the world. No old machines rebuilt and sold as new.

## Caligraph Special, No. 3.

WHILE the high standard reached in the manufacture of our regular No. 1 and No. 2 machines will be fully maintained, we now place on the market our latest effort in the manufacture of writing machines—the CALIGRAPH SPECIAL, No. 3.

For finish and construction we believe this machine is unequaled by any other typewriter on the market to-day. It has been built without regard to expense in manufacture, in response to a demand for a typewriter that would produce the best results regardless of cost. We think we have accomplished this, retaining all of the valuable features of our regular machines and adding such improvements as our long experience in the manufacture of typewriters has suggested.

Like all staple articles the Caligraph has long since passed the experimental stage, and, as old manufacturers of writing machines, we present this new instrument as our highest product, and guarantee that it will give perfect satisfaction.



Price, with office case, \$100.00.

ALL PARTS ARE INTERCHANGEABLE AND BEARINGS  
ADJUSTABLE.

This machine has seventy-eight characters, giving complete set of capitals and lower case letters and the numerals, the characters \$, &, %, -, @, #, /, and the punctuation marks. It combines all of our most recent improvements with the good points of our regular machines. There are six more keys than on the regular No. 2, a new ribbon feed, and two interchangeable platens, besides a number of important improvements, and we believe it is to-day the best built, most rapid and durable, least complicated, most adjustable and easily operated typewriter on the market.

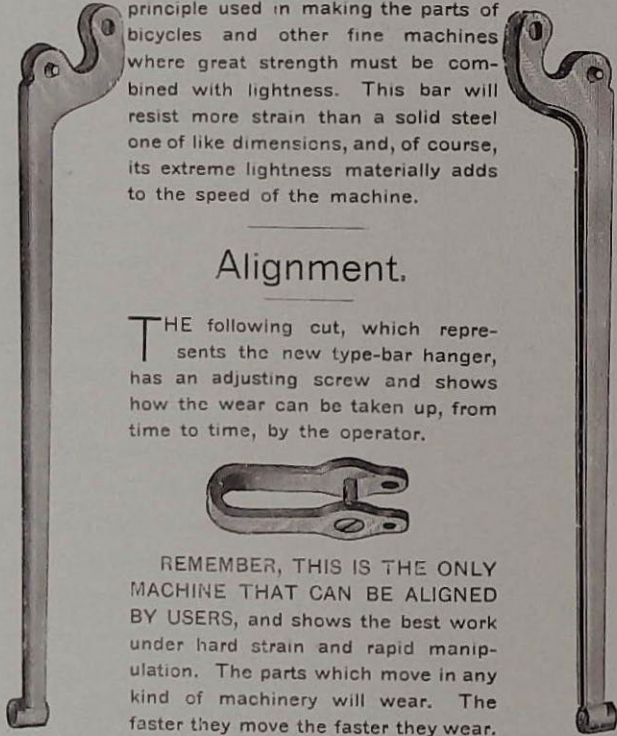
For diagram of key-board, see page 13.

For styles of type from which to select, see pages 18 and 19.

For cabinets, furniture, and accessories, see pages 21 to 36.

## The Improved Type-Bar.

THE Caligraph is fitted with our new Patent Steel Type-Bar. By referring to the illustrations it will be seen that this bar is struck up from sheet steel. This bar embodies the principle used in making the parts of bicycles and other fine machines where great strength must be combined with lightness. This bar will resist more strain than a solid steel one of like dimensions, and, of course, its extreme lightness materially adds to the speed of the machine.



### Alignment.

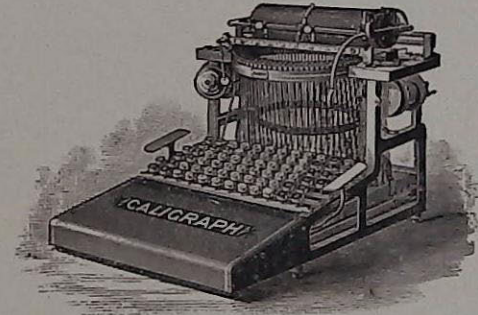
THE following cut, which represents the new type-bar hanger, has an adjusting screw and shows how the wear can be taken up, from time to time, by the operator.



REMEMBER, THIS IS THE ONLY MACHINE THAT CAN BE ALIGNED BY USERS, and shows the best work under hard strain and rapid manipulation. The parts which move in any kind of machinery will wear. The faster they move the faster they wear.

This is common to all, AND THE CALIGRAPH ALONE IS ADJUSTABLE. Look out for durability!

## No. 2 Caligraph.



Price, with office case, . . . . . \$85.00

ALL PARTS ARE INTERCHANGEABLE AND BEARINGS ADJUSTABLE.

THIS machine has seventy-two characters, giving complete set of capitals and lower case letters, the numerals, punctuation marks, etc., etc. Prints each character at a single stroke, thereby saving a large per cent. of time and labor over machines using the shift key for capitals and figures.

For diagram of key-board, see page 13.

For styles of type from which to select, see pages 18 and 19.

For cabinets, furniture, and accessories, see pages 21 to 36.

## Special Machines.

### No. 2 Wide Carriage.

Key-board same as regular No. 2.

THE No. 2 Wide Carriage is similar to the No. 2 already described, except it is provided with a carriage which takes in a sheet of paper eleven and one-half inches wide and writes a line nine and one-quarter inches long. This machine is used by corporations, insurance companies, etc., for tabulating and work of that description.

Price, \$90.00.

### No. 3 Special Wide Carriage.

Key-board same as No. 3 Special.

Price, \$105.00.

### No. 2 Extra Wide Carriage.

EXTRA wide carriage machines for special work accommodate paper seventeen inches in width, and the length of writing line will correspond. The same machine will write on note paper, postal cards, envelopes, etc., without any attachments. Every machine is complete in itself.

Price, \$100.00.

(10)

### No. 1 Caligraph.



Price, with office case, . . . . . \$70.00

ALL PARTS ARE INTERCHANGEABLE AND BEARINGS  
ADJUSTABLE.

THIS machine writes with capital letters, figures, punctuation marks, commercial signs, etc. They are as well made as the No. 2, and will do the same work, except that the writing is all in CAPITALS. It will use paper nine inches wide, note paper, or postal cards.

For diagram of key-board, see page 13.

For styles of type from which to select, see pages 18 and 19.

For cabinets, furniture, and accessories, see pages 21 to 36.

(11)

## No. 3 Special, Extra Wide Carriage.

Price, \$110.00.

## No. 2 Commercial.

THIS makes a valuable machine for billing purposes, and can be used for general correspondence, although the regular machines are preferable. It is fitted with a single case of letters, using the same types as used on the No. 1 machine. Ten of the twenty-six keys representing capital letters in the ordinary No. 2 Caligraph are here utilized for an extra and smaller set of figures, so that any fraction can be made, thus,  $33\frac{1}{3}$ ,  $12\frac{1}{2}$ . The other sixteen keys are used for business signs and characters, as @, %, -, £.

Price, \$85.00.

## Diagram of Key-Boards.

WHILE we are certain that our regular key-boards are the best possible arrangement for speed and ease of operators, whether beginner or expert, we can assemble them, without extra charge, to suit those who have been long accustomed to other makes of machines, or insert special characters adapted to any particular line of work.

On next page will be found the diagrams which are generally used.

Diagram of key-board, No. 2 Caligraph.



The Caligraph Special, No. 3, adds the following characters:

¢ — @ # % /

Diagram of key-board, No. 2 Commercial.



Diagram of key-board, No. 1 Caligraph.





## For Export.

AS our export trade is conducted from the general offices, please apply directly to The American Writing Machine Co., Hartford, Conn., for information, etc., regarding machines for shipment to other countries.

We have Russian types and accent marks for French, Spanish, or German, and fit up machines with type for writing any of the modern languages without extra charge.

Our machine is especially well suited to writing German, on account of the great number of capitals used in that language, and we do not have to use the shift key for upper case, as is the case with other machines.

OUR MACHINES ARE SOLD BY LOCAL AGENTS IN ALL PARTS OF THE WORLD.

## Specimens of Writing.

Russian.

Скорость письма на Калиграфѣ  
опредѣляется приблизительно  
50-ю словами въ минуту.

German.

Die Vorzüge dieser Maschinen  
sind am besten demonstrirt durch  
deren rapide Verbreitung.

French.

L'écriture à la machine se copie de  
la même manière que l'écriture à la  
plume.

Spanish.

Estas lineas son el facsimile del  
tipo que se emplea en el Caligrafo  
No.2 que lleva tipo romano pequeño.

## Testimonials.

---

WE do not crowd the pages of this trade circular with letters of recommendation, but we print a pamphlet especially devoted to them, and containing a large number of the most influential character. These pamphlets will be mailed to interested parties free on application.

---

## Why it is Faster than the Pen.

---

IN pen writing you use only one hand, and it requires from three to seven strokes to make each letter. With the Caligraph you use both hands, and produce each character with ONE stroke.

---

## Time to Learn.

---

LESS than a week's time will equal the pen, and a month or six weeks more than double the average penman. The i's will all be dotted and the t's stroked.

## Speed.

---

THE greatest speed can be attained on our machine from the fact that it is the only double-case instrument of its class that produces each character at a single stroke, and thus fully economizes time and labor. The operator is not obliged to make false strokes for capitals and punctuations, as in old-fashioned machines; the keys are supported so that they do not warp out of position, and are far enough apart to prevent hitting two keys at one time, and the distance of depression is not so great as in others. (A horse can run a half mile in less time than a mile.) What could be more simple than one thing at a time, and how long shall we have to wait for more speed than a perfect character at each stroke, while some are still using the old method of two strokes for a character? Those who have followed the records of speed made by Thomas W. Osborne on the Caligraph, know that he has proved beyond all doubt that the Caligraph can be operated faster than any other machine.

Styles of Type for No. 1  
Caligraph.

NO. 1.

ONE OF THE REGULAR STYLES OF ROMAN  
TYPE FOR NUMBER ONE MACHINES.

NO. 2.

THIS IS A SPECIMEN OF THE WRITING  
OF A LARGER SIZE OF SAME TYPE.

NO. 3.

ONE OF THE TWO STYLES OF GOTHIC  
TYPE USED ON NUMBER ONE MACHINES.

NO. 4.

THIS IS A SPECIMEN OF THE WRITING  
OF THE LARGE GOTHIC TYPE.

Styles of Type for No. 2, and Cal-  
igraph Special No. 3.

No. 5.

A specimen of the writing of one of  
our roman types.

No. 6.

This style of type is most generally  
used on our number two machines.

No. 7.

A handsome type which we have had  
much call for.

No. 8.

Easily read and used by the  
Clergy and other professional  
men.

No. 9.

A sample of the writing of our new Elite  
type, lately brought out.

No. 10.

*Preferred by a few, because of  
its close resemblance to pen-  
manship.*

## Superior Manifolding.

**N**O other machine can equal the Caligraph in number of manifold copies or clearness of impression. Machines for manifolding should be fitted with hard platens when over three copies are required.

The Caligraph to-day "Stands at the Head" as a manifolding machine, and is immensely popular among lawyers and stenographers for its speed and manifolding power.

## Telegraph Code.

**T**HE numbers in the code correspond with the numbers of different styles of type shown on pages 18 and 19.

No. 1.	ONE.	TWO.	THREE	FOUR.
--------	------	------	-------	-------

No. 2.	FIVE.	SIX.	SEVEN.	EIGHT.	NINE.	TEN.
--------	-------	------	--------	--------	-------	------

Add plural to No. 1's for Commercial.

Add plural to No. 2's for Special.

Prefix WIDE for Wide Carriage.

EXAMPLE: Express Ten Wide Seven, signifies: Express Ten No. 2 Wide Carriage Caligraphs, No. 7 Type.

## Roll Top Drop.

CLOSED.



Size, 4 feet 2 inches by 4 feet by 28 inches.

Price, in Walnut, Antique Oak, or Cherry, . . . \$50.00

Size, 4 feet 8 inches by 4 feet 2 inches by 33 inches.

Price, in Walnut, Antique Oak, or Cherry, . . . \$75.00

**T**HESE Cabinets are of the finest finish and manufacture, and belong to the best line of writing machine furniture, on the market. They make an elegant and substantial desk for all well furnished offices.

Send for our Sample Book of Fine Linen Papers.

## Roll Top Drop.

OPEN.



Cabinet ready for use.

Price, in Walnut, Antique Oak, or Cherry, . . . \$50.00

Price, in Walnut, Antique Oak, or Cherry, . . . \$75.00

THESE desks are particularly desirable for those who operate the machine without the aid of a stenographer. The change from regular writing to typewriter desk can be made in a few seconds.

Send for our Sample Book of Fine Linen Papers.

## Roll Top Drop.

OPEN.



Cabinet with machine ready for use.

Price, in Walnut, Antique Oak, or Cherry, . . . \$50.00

Price, in Walnut, Antique Oak, or Cherry, . . . \$75.00

WE would call special attention to our large-sized Roll Top Drop Cabinets. Used simply as a writing desk, they equal, in every particular, the regular roll top desks sold, at the prices given above.

Send for our Sample Book of Fine Linen Papers.

## Eight-Drawer Drop Cabinet.

CLOSED.



Price, A Finish, . . . . . \$30.00

Price, B Finish, . . . . . 25.00

West of the Mississippi, \$5 extra.

Furnished in Walnut, Antique Oak, or Cherry.

**T**HIS Cabinet is dust-proof, and when not open for use with writing machine, makes a most convenient desk for other purposes. Its eight drawers are made to lock, and are of convenient size for holding legal and letter paper, also envelopes and unanswered correspondence.

Send for our Sample Book of Fine Linen Papers.

## Eight-Drawer Drop Cabinet.

OPEN.



Price, A Finish, . . . . . \$30.00

Price, B Finish, . . . . . 25.00

Size, 47½ inches long by 24½ inches deep by 30½ inches high.

Furnished in Walnut, Antique Oak, or Cherry.

**T**HIS cut shows Cabinet open, with machine ready for use. Only a second's time is required to accomplish this. Operators using machine in this Cabinet will find it brings instrument at nearer the desired height for manipulation than any now in use.

Send for our Sample Book of Fine Linen Papers.

## Four-Drawer Drop Cabinet.

CLOSED.



Price, A Finish, . . . . . \$25.00  
 Price, B Finish, . . . . . 20.00

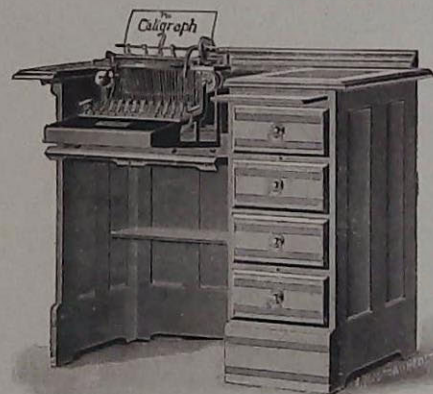
West of the Mississippi, \$5 extra.  
 Furnished in Walnut, Cherry, or Antique Oak.

WITH the exception of four drawers less, the same as our eight-drawer cabinet. We can recommend this desk to parties preferring a four-drawer cabinet, as the most simple and convenient now on the market, and in every way as suitable for the library and private use as in the office.

Send for our Sample Book of Fine Linen Papers.

## Four-Drawer Drop Cabinet.

OPEN.



Price, A Finish, . . . . . \$25.00  
 Price, B Finish, . . . . . 20.00

Furnished in Walnut, Cherry, or Antique Oak.  
 Size, 36½ inches long by 24½ inches deep by 30½ inches high.

A SIMPLE, well-finished, and dust-proof drop cabinet is desirable in every office where a writing machine is used. A writing machine that is kept free from dust and dirt, and from ill-treatment by the inexperienced, will seldom if ever, require repair.

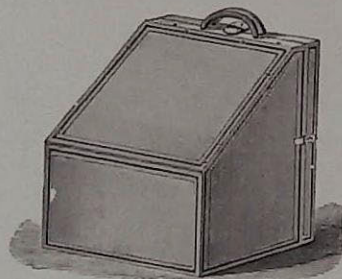
Send for our Sample Book of Fine Linen Papers.

## Caligraph Stand.



Price, . . . . . \$5.00

Size, 34 X 16 inches.



## Traveling Case.

Price, . . . . \$15.00

Made of brown grain leather and lined with velvet.

(25)

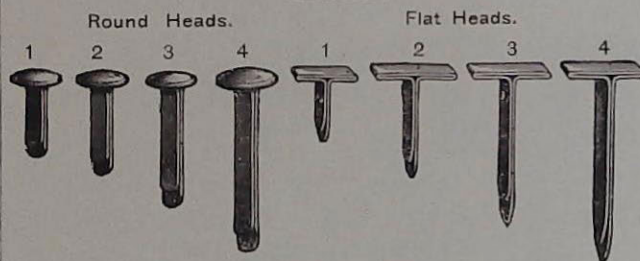
## Hanchett's Column Indicator.

FOR USE ON THE CALIGRAPH.

WE have purchased the exclusive right to use this valuable writing machine attachment on the Caligraph. It can be attached to the machine in a few seconds. Invaluable for tabular work or writing of that character. The danger of making mistakes in spacing greatly lessened, and no strain on the eyes during tabular work.

Price, sent post-paid, 50 cents.

## McGill's Fasteners.



PRICE PER 100.

No. 1, . . . .	35 cents.	No. 1, . . . .	25 cents.
No. 2, . . . .	35 cents.	No. 2, . . . .	25 cents.
No. 3, . . . .	40 cents.	No. 3, . . . .	30 cents.
No. 4, . . . .	45 cents.	No. 4, . . . .	35 cents.

(29)

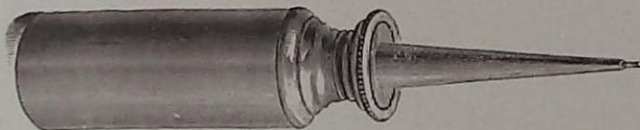


## Office Case.



Price, . . . . . \$5.00  
 Free with each new No. 2 machine.  
 Regular cloth-covered case with No. 1.

## Pocket Oil Can.



Price, . . . . . 35 cents.

OIL MANUFACTURED EXPRESSLY FOR  
 WRITING MACHINE USE.

Price, per bottle, . . . . . 15 cents.

### TYPE BRUSHES.

For cleaning type, . . . . . 20 cents.

### CHAMOIS SKINS.

For cleaning machine, . . . . . 25 cents.

## Copy Holder.



INDISPENSABLE for holding stenographic  
 note books, manuscript, etc., etc., while  
 using machine.

Holder revolves upon the heavy base,  
 and is adjustable to height and angle.

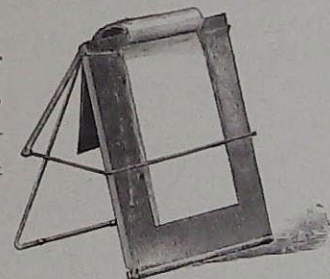
Japanned and nickeled, with rubber feet,  
 complete with line indicator.

Price, \$2.50.

## Favorite Copy Holder.

A VERY useful device for  
 holding note books,  
 copy, etc. The most practical  
 copy holder on the market  
 for the money.

Price, \$1.50.



## Peabody's File and Binder.

IS the outgrowth of the demand for a ready and convenient device for the preservation of carbon work. It is made in book form, letter and legal sizes, cloth covered, and bound in Russia leather. The file is supplied with superior linen paper for carbon impressions. Corporations, firms, and individuals using the typewriter for correspondence or other work, should see this file and binder. References will be given to those already using it. Samples for examination sent on application.

### INSTRUCTION BOOKS.

AS there is a demand for a good instruction book, for the use of learners and operators on the Caligraph, we carry Mrs. M. V. Longley's Book of Calligraph Lessons, which teaches a systematic method of using the fingers and becoming expert on the machine.

Price, 50 cents.

### LEATHERETTE MANUSCRIPT COVERS.

Morocco and Alligator, all colors, durable and handsome.  
Letter size, double cover, . . . 10 cents each, \$7 per 100  
Legal size, . . . . . 7 cents each, 5 per 100

## Miscellaneous Supplies.

Our ribbons are of the best material and manufacture.

### CALIGRAPH RIBBONS.

Underwood's and Little's. Copying.

Price, \$1.00 each. \$9.00 per dozen.

Black Copying Purple, Blue, Black Copying Green,  
Purple, Red, Green.

### RECORD RIBBONS.

Price, \$1.00 each. \$9.00 per dozen.

Black, Purple, Green, Blue, Red; also Hektograph  
and Lithograph Ribbons.

Indelible Official, \$1.50 each. Duplicator, \$2.00 each.

### TYPEWRITER RIBBONS.

Price, \$1.00 each. \$9.00 per dozen.

Re-Inked, 50 Cents Each.

## Miscellaneous Supplies.

### CARBON PAPER.

Underwood's and Little's.

#### SEMI.

8 x 10 or 8 x 12,	50 cents a dozen,	\$4.00 per 100
8 x 13,	60 cents a dozen,	4.50 per 100

#### FULL.

8 x 10 or 8 x 12,	50 cents a dozen,	\$3.00 per 100
8 x 13,	50 cents a dozen,	3.25 per 100

### HEKTOGRAPH CARBON.

Per dozen sheets, \$1.25.	15 cents a sheet.
Per 100 sheets, \$8.00.	

## Stenographers' Note Books.

### LETTER PRESS COPY BOOKS.

Best for copying writing machine work. Price, \$1.50 each;  
\$16.00 per dozen.

### MANIFOLD TISSUE.

Per book, 8 x 12 inches, 15 cents each (96 leaves to book).

(34)

## The Kerner Ink Eraser.

THIS eraser is forged from the finest quality of Jessup's English steel, and being highly tempered, holds an edge longer than any other heretofore in use. It will last longer than fifty of any other eraser in the market.

Price, 50 cents each; \$5 per dozen.



Ink Eraser.

### FABER'S RUBBER INK ERASERS.

## Hill's Patent Blotter Bath.

FOR dampening copying sheets. The best device ever invented for the purpose. No brush or water used on the copy book. The most rapid letter copying process in use.

	Price List.	Jap.	Gal.
10 x 12, with paper pads,	. . .	\$3.00	\$4.00
10 x 15, " " "	. . .	3.85	5.25

(35)

## The Edison Mimeograph.



THIS mode of duplicating typewriting has been so perfected that the process of taking a large number of copies from one writing on a writing machine is a comparatively simple operation.

This work has all the appearance of that done on the machine.

Colored inks corresponding with the colors of the different ribbons are furnished as desired.

This process is almost indispensable in all large offices where circular letters, price-lists, discount quotations, letters of instruction to salesmen, notifications, letters of inquiry, etc., are sent out.

Our stock of stencil papers, inks, and all kinds of duplicating machine supplies cannot be surpassed, by any on the market.

Send for circular and price-list or call at office of the Caligraph.

## Supplies.

WE manufacture and deal extensively in Linen Papers, Furniture, Drop Cabinets, and all supplies that are used in connection with the different makes of typewriters, and handle only those goods that are known to be the best adapted to the purpose for which they are used.

Our stock embraces the most extensive line of writing machine furniture on the market, gotten up in different woods and in all styles, from a plain stand to a roll-top drop cabinet desk.

In typewriter linen papers we have the greatest variety from which to make selection, and invite comparison of the same with those of other dealers both in regard to quality and price.

Our ribbons, carbon paper, and all other accessories are all standard goods, and those most used by the largest consumers.

“Caligraph”



Manufactured by

The American Writing Machine Co.,

HARTFORD, CONN., U. S. A.