

Blickensderfer
Typewriters.

*A. G. Morgan
Stamford, Ct.
Phone 803-5*

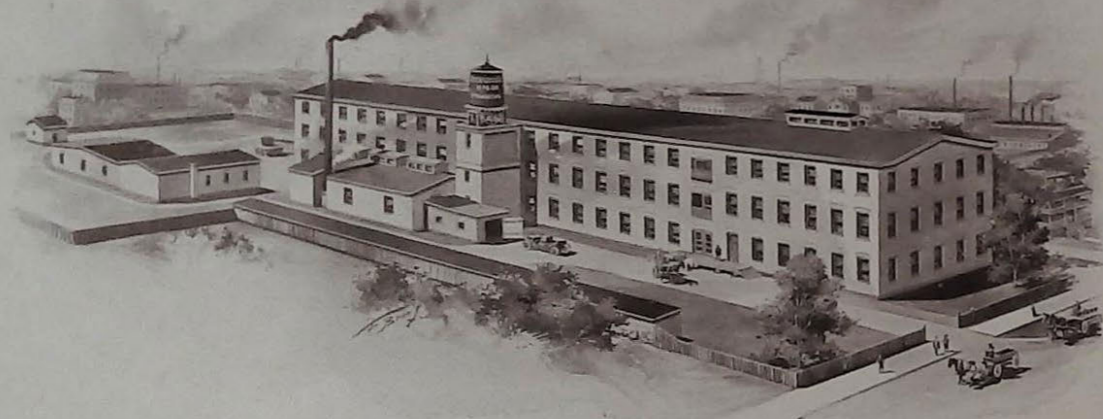
THE BLICKENSDERFER MANUFACTURING CO.

OUR GUARANTEE

We warrant all of our machines to be of good workmanship and material, and agree to furnish free within one year, any parts that may wear out or break, if not caused by misuse or neglect
THE BLICKENSDERFER MFG. CO.

EXECUTIVE OFFICE AND FACTORY: STAMFORD, CONNECTICUT, U. S. A.

* * * * * CABLE ADDRESS: "BLICK," STAMFORD * * * * *



. . . . INTRODUCTION



IN presenting our latest catalogue, the aim is to call attention to the New Models of Blickensderfer Typewriters, and to give, as clearly as is possible in print, an intelligent description of them with their latest improvements.

Blickensderfer Typewriters have been known for more than fifteen years, and their great merits testified to by over 150,000 satisfied users.

The New Models are equipped with all the high-grade typewriter improvements, possess the least number of parts of any of the standard machines, are stronger, do better work, and will give greater satisfaction than any other typewriter made.

In the manufacture of these machines the closest possible attention is paid to every minute detail. Each part has to pass a searching inspection. All the important wearing parts are made of the finest material obtainable. The machinery employed is the very highest grade; the workmen are all skilled mechanics, thoroughly trained in the construction of these typewriters and are in every way capable of producing the most finished and durable work.

The machines are built on the right principle and are models of convenience, simplicity and efficiency.

The facts substantiating these claims are set forth in the following pages in a way to merit a careful perusal.

The Blickensderfer System

The Advantages of the Type Wheel Machine



THE BLICKENSDERFER system of typewriting machines belongs to what is termed the *wheel* class, as distinguished from that in which the type is attached to the end of separate type-bars. It can be readily appreciated that with from 28 to 84 separate moving parts all centering at the same point the slightest amount of wear will result in poor alignment and centering of letters. By placing all these characters on one wheel poor alignment becomes an impossibility and the centering of impressions is reduced to a very simple problem.

Great Efficiency and Labor Saving

The efficiency of any typewriting machine is determined by the quality and quantity of the work it can do, with the least amount of effort on the part of the operator, in the shortest possible time. The mechanical construction of the BLICKENSDERFER adapts it to the convenience of the operator in every move-

ment he is obliged to make, enabling him to turn out a greater volume of work in less time and with less effort than any other machine.

Paper Easily Introduced and Handled

The first movement of the operator when seated before the machine is to place the paper in position. The superiority of the BLICKENSDERFER becomes at once apparent. The paper is simply pushed under the rubber platen and the roll turned by means of the knurl at either end. The paper passes in smoothly and straight, bringing the heading up in plain sight.

Line Spacing at Any Width Desired--Great Convenience to Operator

By merely turning a thumb-screw the operator can adjust the space between the lines to *any desired width*, enabling him to write perfectly on ruled paper.

Makes Less Noise Than Any Other Machine

A feature which contributes largely to the pleasure of the operator is the absence of that sharp tap of the type on the paper which is so annoying in the ordinary typewriter. The operation of the BLICKENSDERFER is almost noiseless.

Great Advantage of Having Interchangeable Type

The type on this machine is all on a single wheel which is detachable and can be changed in an instant by the operator without the use of a tool. These wheels are made in great variety so that each operator may satisfy his own taste in style or size of type, and if desired can use different types on the same sheet of paper (see next page).

Scientific Keyboard.

Elite No. 365. Code Word—Tinkle.

zxkg.pwfudhiatensorlcmj,bvqj
ZXXG.PWFUDHIATENSORLCMY&BVQJ
-^_(./'!"!1234567890;?%¢\$)@#:

Small Roman No. 407. Code Word—Table.

Zxkg.pwfudhiatensorlcmj,bvqj
ZXXG.PWFUDHIATENSORLCMY&BVQJ
-^_(./'!"!1234567890;?%¢\$)@#:

Large Roman No. 409. Code Word—Tabby.

Zxkg.pwfudhiatensorlcmj,bvqj
ZXXG.PWFUDHIATENSORLCMY&BVQJ
-^_(./'!"!1234567890;?%¢\$)@#:

Italic No. 440. Code Word—Terrace.

zxkg.pwfudhiatensorlcmj,bvqj
ZXXG.PWFUDHIATENSORLCMY&BVQJ
-^_(./'!"!1234567890;?%¢\$)@#:

Script No. 499. Code Word—Timid.

zxkg.pwfudhiatensorlcmj,bvqj
ZXXG.PWFUDHIATENSORLCMY&BVQJ
-^_(./'!"!1234567890;?%¢\$)@#:

Narrow Roman No. 455. Code Word—Tetter.

Zxkg.pwfudhiatensorlcmj,bvqj
ZXXG.PWFUDHIATENSORLCMY&BVQJ
-^_(./'!"!1234567890;?%¢\$)@#:

Large Narrow Roman No. 457. Code Word—Topaz.

Zxkg.pwfudhiatensorlcmj,bvqj
ZXXG.PWFUDHIATENSORLCMY&BVQJ
-^_(./'!"!1234567890;?%¢\$)@#:

Mimeograph No. 474. Code Word—Turn.

Zxkg.pwfudhiatensorlcmj,bvqj
ZXXG.PWFUDHIATENSORLCMY&BVQJ
-^_(./'!"!1234567890;?%¢\$)@#:

Small Roman No. 362. Code Word—Tease.

Zxkg.pwfudhiatensorlcmj,bvqj
ZXXG.PWFUDHIATENSORLCMY&BVQJ
-^_(./'!"!1234567890;?%¢\$)@#:

Large Roman No. 374. Code Word—Trait.

Zxkg.pwfudhiatensorlcmj,bvqj
ZXXG.PWFUDHIATENSORLCMY&BVQJ
-^_(./'!"!1234567890;?%¢\$)@#:

Universal Keyboard.

Small Roman No. 406. Code Word—Torment.

qwertasdfgzxcvbnm,hjkl.yuiop
QWERTASDFGZXCVBNM?HJKL.YUIOP
"#\$%_/-¢@;23456789;!^1.&'(0)

Large Roman No. 418. Code Word—Tornado.

qwertasdfgzxcvbnm,hjkl.yuiop
QWERTASDFGZXCVBNM?HJKL.YUIOP
"#\$%_/-¢@;23456789;!^1.&'(0)

Italic No. 497. Code Word—Tractable.

qwertasdfgzxcvbnm,hjkl.yuiop
QWERTASDFGZXCVBNM?HJKL.YUIOP
"#\$%_/-¢@;23456789;!^1.&'(0)

Script No. 304. Code Word—Trap.

qwertasdfgzxcvbnm,hjkl.yuiop
QWERTASDFGZXCVBNM?HJKL.YUIOP
"#\$%_/-¢@;23456789;!^1.&'(0)

Elite No. 325. Code Word—Tempest.

qwertasdfgzxcvbnm,hjkl.yuiop
QWERTASDFGZXCVBNM?HJKL.YUIOP
"#\$%_/-¢@;23456789;!^1.&'(0)

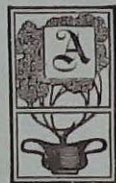
Small Roman No. 364. Code Word—Tithe.

qwertasdfgzxcvbnm,hjkl.yuiop
QWERTASDFGZXCVBNM?HJKL.YUIOP
"#\$%_/-¢@;23456789;!^1.&'(0)

Nearly 100 different varieties of type are used on the Blickensderfer Typewriters, embracing all of the principal languages. We show in this catalogue only the different styles of type in general use on the English machine. Styles of type for foreign languages will be furnished upon application.

Typewheels with special, in place of regular characters, can be furnished at a cost of fifty cents per special character, in addition to the regular price, when so ordered.

Interchangeable Ink Rolls, Giving a Variety of Colors as Desired



ALL the ink on a BLICKENSBERGER Typewriter is contained on a small felt roll which can be removed instantaneously. These rolls are made in a variety of colors, both record and copying, and sold at a nominal price. An operator can change the color and character of his ink at will with the same ease that he can change the style of his type, thus affording an opportunity of suiting all tastes and the requirements of all classes of work.

Insertions and Corrections Easily and Rapidly Made

No time is lost by the operator in raising the carriage to examine the work as he is obliged to do in many other machines, for every letter appears in plain sight as soon as printed and the entire work remains in sight until the sheet is finished. The liability to error is very much reduced by this fact, but if a word or letter has been omitted the insertion or correction is made by means of the pointer, without the use of a scale and in one-half the time in which it can be done on any other machine. If any error is discovered in a finished sheet the paper can be replaced in the machine, the roller turned until the pointer reaches the line in which the fault occurs, and the carriage then moved to the required point of printing and the corrections made in plain sight.

Carriage Free to Move in Either Direction

This operation is surprisingly convenient by reason of the free carriage which can always be turned forward or backward and moved in either direction without pulling against a heavy spring.

Clean Printing and Direct Inking—A Distinctive Feature Not Found in Other Machines



ONE of the principal features of the BLICKENSBERGER is its beautiful clear impression equalled only by the printing press. Ribbons blur and the impressions are never sharp and clear. Pads get dry and hard and do not ink the type evenly, because the type always rests in the same place on the pad and the letter most frequently used will exhaust the ink long before the others. Printers found out long ago that there is only one way to get even inking—that is by rollers. The BLICKENSBERGER uses an ink roller, inking each type directly and evenly, resulting in the most beautiful work ever done on a typewriter.

Alignment Always Good—A Strong Point

On almost all typewriting machines perfect alignment is most difficult to obtain, and it is usually the first point in which the effects of wear become apparent; the alignment becoming ragged and uneven after a comparatively short term of use. This is particularly the case in machines where the type is on the end of long bars. As these bars are not used with the same frequency, the bearings wear unevenly and this wear is magnified in proportion to the length of the bar. On the BLICKENSBERGER the type is all on a single wheel and it is in *absolute and perfect alignment*. It cannot change with any amount of wear, but remains perfect as long as the machine is used.

Manifolding Power Greater Than in Other Machines

At first sight the BLICKENSBERGER machines have been regarded with suspicion by some on account of their small size and light weight, and doubt has been expressed as to their ability to stand the hard work incidental to heavy manifolding and stencil work. One trial will convince any operator that

not only is this doubt without foundation but that the BLICKENSDERFER is the most powerful manifolder on the market to-day. Any one with a slight knowledge of mechanics will appreciate that the direct blow of the type-wheel is far more powerful than can be obtained with a type-bar. The capacity of this machine is limited only by the number of sheets which can be introduced into the carriage, and a given number of clear copies can be obtained on it with the expenditure of much less force than on any other typewriter.

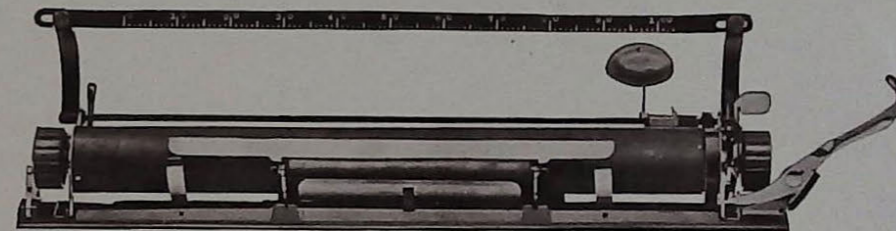
One of the most serious defects of the type-bar machines is the change of alignment when using different thicknesses of paper. If the machine is adjusted to align perfectly on one sheet of paper, the writing will be bad when using several sheets for manifolding. The BLICKENSDERFER has perfect alignment on any number of sheets. *It cannot change.*

Mimeograph Stencil Cutting

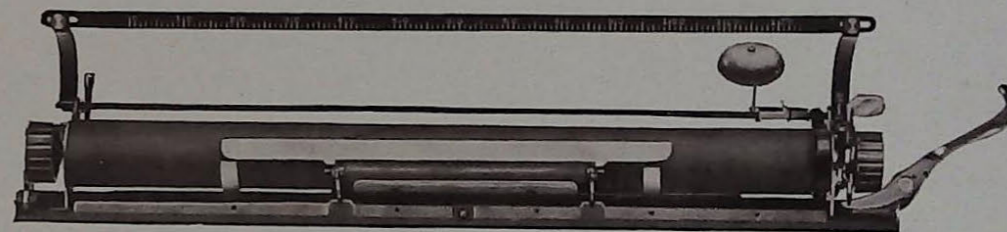
The interchangeable type-wheel is a great convenience to those who desire to prepare stencils for duplicating purposes, as it obviates the necessity of constantly cleaning out the type. The same powerful direct stroke which makes the BLICKENSDERFER a perfect manifolder, gives a fine stencil on the wax sheet. The ink roll may be left in position, enabling the operator to more readily see his work and detect errors, or, if preferred, it can be turned back clear of the type wheel.

Extra Length Carriages to Accommodate Use of Wide Paper When Desired

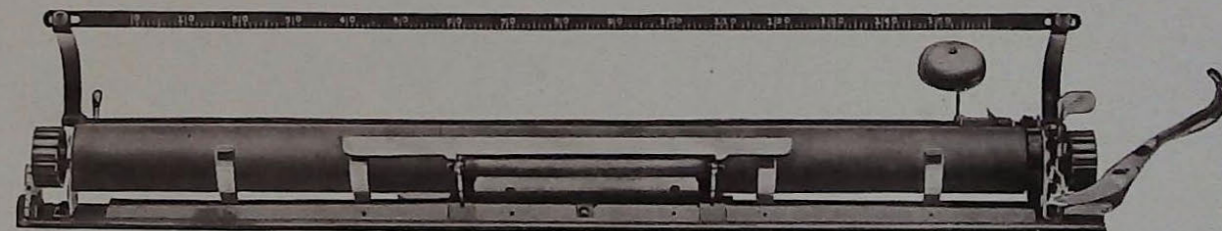
An operator having occasion to use paper wider than ordinary has heretofore been obliged to purchase a machine specially constructed for this work. We are prepared to furnish with the BLICKENSDERFER (No. 7 and No. 8), carriages of different lengths to take paper $9\frac{1}{4}$ inches, 12 inches, 14 inches and 18 inches wide. (See next page.)



12 INCH



14 INCH



18 INCH

These carriages are interchangeable in the No. 7 or No. 8 machine. Unless otherwise ordered, machines are delivered with carriages of the standard length to take paper $9\frac{1}{4}$ inches wide. The extra length carriages are subject to an additional charge, as per price list.

They Are Portable and Strong

Any operator who has had occasion to move one of the old style cumbersome typewriters from place to place, can appreciate the immense advantage the BLICKENSBERGER possesses in its light weight and convenient size. Authors, traveling salesmen and professional men who frequently desire to carry their machines when traveling find this to be the only one which can justly be called a portable machine.

Sold at a Popular Price

One does not need to be an expert in typewriters to see that with the conveniences described, *all* of which are to be found on *no* other typewriter and *some* of which cannot be found on *any other*, the BLICKENSBERGER Typewriter will do more work and more kinds of work, is more efficient and more convenient, and, in a word, is *better* than any other now on the market. At even prices it would be to the advantage of any operator to purchase this machine, but when it is considered that the BLICKENSBERGER is sold at one-half the price of its competitors, there is no longer room for hesitation.

Simplicity of Construction Means Durability

How can we do it? It is all explained in one word—*simplicity*. The BLICKENSBERGER system of typewriter is a *revolution*, a radical departure from all old ideas of principle, form and construction.

Simplicity is the keynote of this new idea: *Simplicity* in construction and *simplicity* in operation. With one-quarter of the number of parts required in the construction of other typewriters, this machine produces superior work and will stand the hardest kind of service. All the important wearing parts are made from the toughest, finest and highest-priced steel on the market by the highest class skilled labor. They are put together in the best possible way to accomplish the desired results, and the complete machine is a perfect piece of finished mechanism at a price lower than can be reached by any of the type-bar class, no matter how cheap their cost of production.

Not Cheap But Low Priced

The BLICKENSBERGER is *not a cheap made machine*. We have one of the largest and best equipped factories in the world that is devoted exclusively to the manufacture of typewriting machines. While exercising the greatest care and using the best material obtainable in the manufacture of our machine, the small number of parts enables us to give greater value at less price.

Durability Guaranteed—We Guarantee the Strength and Durability of the Blickensberger

Simplicity means *durability*. Fewer working parts, fewer wearing points, mean less repairs. Every piece that takes a strain, every part that moves has been designed after the most exhaustive tests until all *weak points* have been *eliminated*. No typewriting machine made will stand one-half the abuse to which the BLICKENSBERGER may be subjected without injury. On other machines to strike two keys at the same time means a ruined alignment and injured type; on the BLICKENSBERGER *all* the keys may be struck at the same time without any possible injury to the machine. If used properly it cannot be broken. If its limit of endurance is exceeded by abuse, a trifling expense will make it as good as new.

Manufacturing Dept. M



Expense of Maintaining is Less Than Other Machines



In addition to the saving of money in the original purchase and in the cost of repairs, we also save you the cost of expensive ribbons. Our ink rolls are sold at a nominal price, are most convenient to handle, and will do better work than any ribbon ever made.

Natural Stroke is Used

One of the most serious objections which can be made to the use of the many machines having the type at the end of a bar or lever, is the nerve-jarring stroke which must be used on the keys to obtain good printing. Each key must be struck sharply with the end of the finger, where all the nerves center, and each blow so given is one more step toward nerve paralysis. The only natural way to use the fingers is to press with the ball of the finger against a light, elastic resistance. This gives no nervous shock to the operator, is less tiring and far more speedy. But try this stroke on any type-bar machine and note the dirty, blurred impression which results, even on the newest and best machine. It is simply impossible to use this natural touch on that class of typewriters, and the operator is forced to tire both muscle and nerves in the effort to obtain good work by striking with the ends of the fingers. In designing the BLICKENSBERGER machines this question of touch received most careful study, and as a result of long and exhaustive experiment it has been constructed with an easy action, a soft and elastic touch which enables the operator to write at the highest rate of speed with less tiring of the nerves and muscles than is possible on any other machine. To get the *best results* with the *least effort* it is necessary to use the *natural stroke* for which the machine is designed. Touch the keys with the ball of the finger and *press them down*. It is not necessary to *strike* the keys, you simply *press* them. The movement of the fingers is much less, and it is not necessary to lift them high above the key-board. The speed is greater, both because of this smaller movement and of the lesser muscular effort required.

. . . Key-Board . . .

A Few Facts Concerning the Blickensderfer Scientific Key-Board



THE letters most used are *nearest* the operator. Seventy per cent. of all work is done on the lowest bank of keys. Almost all word endings are close to the space bar. Frequent combinations of letters are close together. The hands travel over the least possible distance.

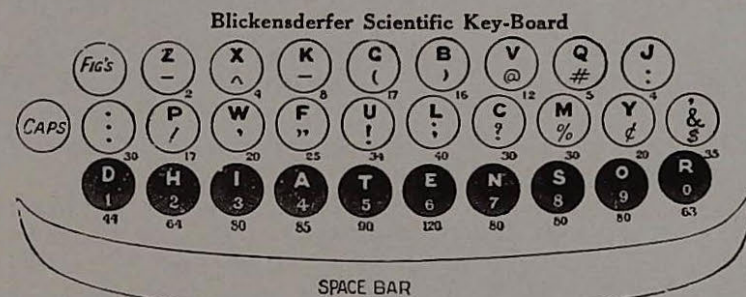
A study of the adjoining cuts of the two arrangements, the BLICKENSDERFER and the so-called Universal, will show at once the contrast between these two systems.

On the Universal

The letters most used are *farthest* from the operator. The greatest amount of work is done on the upper bank of the keys. Word endings are farthest from the space bar. Letters coming in frequent combination are widely scattered. It would be difficult to design a key-board over which the hands must travel farther.

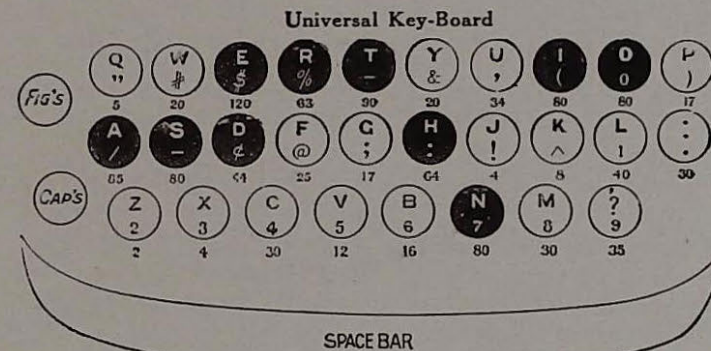
To the purchaser who has not been accustomed to the Universal Key-board these facts are sufficient to convince him that not only is our Scientific arrangement more convenient and less tiring to operate but that far greater speed can be obtained on it than on any other. To the operator who has become proficient on the old style machines and who hesitates to change, it is perhaps necessary to call attention to the fact that the Scientific Key-board can be memorized and high speed attained on it in one-quarter the time

Comparison Between the Blickensderfer "Scientific" and "Universal" Key-Boards



	Percentage of Letters Used	Percentage of Words Used
Upper Bank	6%	2%
Middle Bank	24%	13%
Lower Bank	70%	85%

Space Bar Used One Stroke in Five



Upper Bank	47%	44%
Middle Bank	32%	46%
Lower Bank	21%	10%

Space Bar Used One Stroke in Five

. . . Three-quarters of the Work is Done on the Black Keys . . .

required for the Universal. Is it not worth while to spend a little time in learning a rational key-board for the sake of saving time and labor ever afterward? Thousands of old operators have taken up our Scientific arrangement and bear testimony to the remarkably short time in which they acquire more than their former speed, and in every case they have found the saving both in time and labor so great that they could not now be induced to return to the old key-board.

In the diagrams given, the figures under each key represent the proportionate frequency with which each letter is used. It will be seen that the BLICKENSDERFER Scientific Key-board is arranged on the same principle as a printer's case, the letters most frequently used being on the lowest banks nearest the space bar and most convenient to the operator. As a result 94 per cent. of all work is done on the two lower banks and nearly all the endings of words come on the lowest bank close to the space bar.

On the other hand, the Universal Key-board is not arranged on any principle but resulted from the necessity of humoring the construction of the early machines. The letters most used are widely scattered but appear mostly in the two upper banks, the word endings are farthest from the spacer, and the most frequent combinations are so scattered that the operator is obliged to move his hands over the greatest possible distance and perform the maximum amount of labor to manipulate this key-board.

The Blickensderfer will be furnished with the Universal Key-board when so ordered, but for reasons given above buyers are strongly recommended to use the Blickensderfer Scientific Key-board.

Abuse of Speed on Typewriters

The term speed as applied to typewriters has been very much abused. It is often used to mean the speed with which the parts of the mechanism are capable of moving. This is not a proper conception of

the term, as any first-class typewriting machine is capable of moving much faster than any operator can use his fingers, and speed of operation in this sense depends only on the expertness and muscular endurance of the operator.

Speed as required by the purchaser of a typewriter means the capacity of a machine to turn out the greatest amount of work in the shortest possible time and with the least effort on the part of the operator. This is the only proper test of speed, and judged by this standard the BLICKENSDERFER is by far the fastest machine made.

This result is accomplished by the many important time-saving features, all resulting in a volume of work fully one-third greater than can be obtained on any other machine.

Points to Look for in a Typewriter

Visible Writing.—The BLICKENSDERFER is a visible writer.

Direct Inking and Printing.—The BLICKENSDERFER has both.

Interchangeable Type.—The BLICKENSDERFER type is quickly changed.

Good Manifolding.—The BLICKENSDERFER leads as the best manifolder.

Permanent Alignment.—The BLICKENSDERFER again leads—alignment cannot vary

Portability.—The BLICKENSDERFER machines are easily carried about, weighing from 5 to 12 pounds.

Durability.—The BLICKENSDERFER has great strength. Its durability is guaranteed.

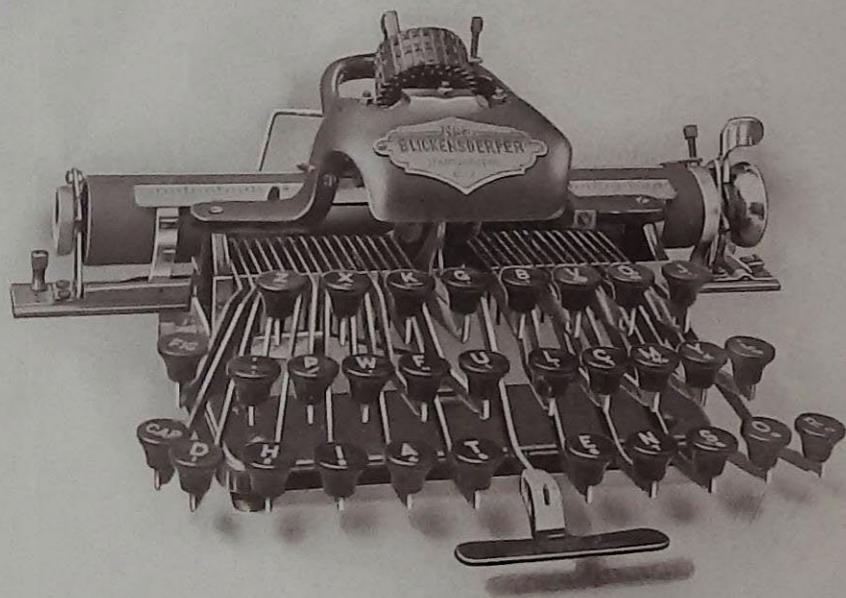
Simplicity.—The BLICKENSDERFER has less than one-quarter the parts of most others.

Quietness.—The BLICKENSDERFER makes less noise than any type-bar machine.

Speed.—The BLICKENSDERFER has great speed—we are at the TOP.

Price.—The BLICKENSDERFER is sold at a popular price—we are at the BOTTOM.

No. 5 Blickensderfer



. . The Blickensderfer No. 5 . .



IS a key-board machine with 84 letters and characters. This machine is constructed upon a principle, peculiarly its own, and combines the best features of the two leading classes of machines, namely: *The perfect and permanent alignment of the wheel class, and the powerful, direct manifolding stroke of the lever class.*

Chief among its many virtues may be mentioned: *Low Price, Full Key-Board, Visible Work, Direct Printing and Inking, Interchangeable Type, Excellent Manifolding Qualities, Simplicity, Durability and Portability.* In no other typewriter, regardless of the name or price, are all of these features found.

This well known model, which has been on the market over fifteen years, has recorded one of the greatest successes in the history of typewriters. Many thousands of these machines have been sold and are now in use in all parts of the world, which is proof of their intrinsic merit. It possesses all of the general features of merit peculiar to the BLICKENSDERFER system.

No. 7 Blickensderfer



The Blickensderfer No. 7



EMBODIES all of the excellent features of the No. 5 machine, to which has been added many new time and labor-saving devices peculiar to the model.

Elevated Scale

It has a scale elevated above the machine in plain view of the operator all the time and by which the writer can locate the printing point instantly.

Left-Hand Margin

The margin at the left of the sheet can be adjusted to *any width* by pressing the margin stop in and sliding it to the desired point on the rod. No set-screws to remove. No fixed limits, but instantly adjustable.

Marginal Notes

If the operator desires to insert marginal notes, by lifting the latch as he returns the carriage he can pass the margin without disturbing the adjustment of the marginal stop.

Alarm Bell and Right Margin Lock

The alarm bell is free to move to any point of the carriage and can be set instantaneously without releasing any screws or catches. Connected with the bell is the Automatic Action stop, which locks the action a few letters after the alarm has sounded, thus securing a clear right-hand margin. If additional letters are required to finish a syllable or word, a touch of the finger releases the action and the lock is left in adjustment for the next line.

Automatic Pointer

In writing a letter the operator first inserts the date. He has no need to consult a scale, nor lift the carriage to see where he will begin to print. The Automatic Pointer which is in plain sight, always indicates the line of printing and the exact point at which the impression will appear.

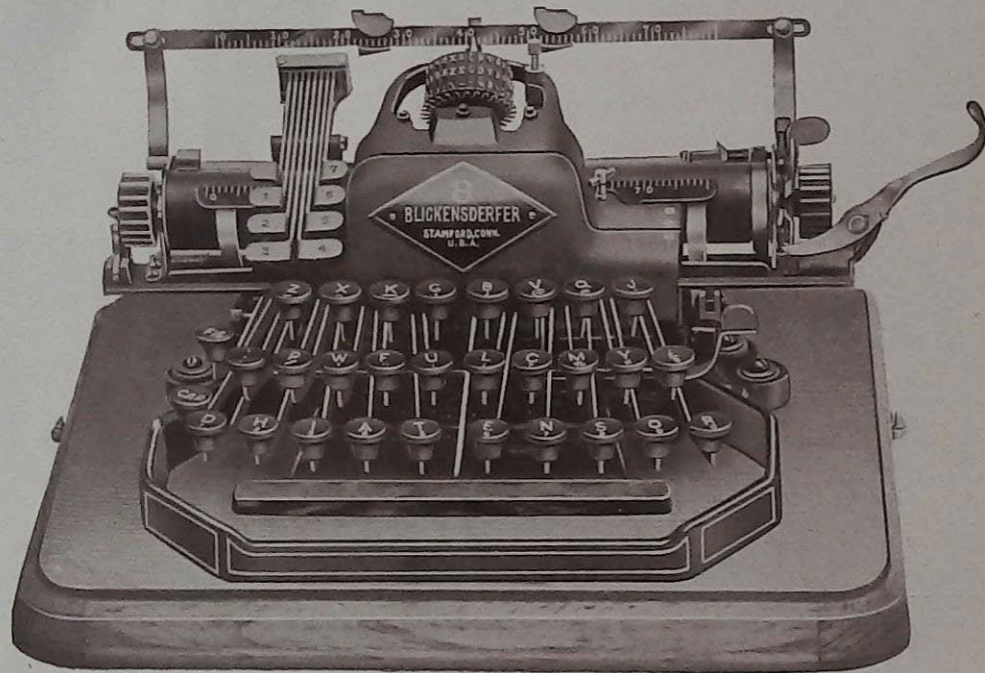
Paper Release

The paper can be released by merely pressing down the *Paper Release Arm* at the left end of the carriage, which will throw the pressure roll away from the platen and leave the paper perfectly free.

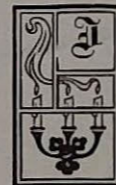
Automatic Line Spacing

When the carriage is returned to the right it spaces automatically for the next line, giving any desired width between the lines. This enables the operator to write on ruled forms or paper when desired.

No. 8 Blickensderfer



. . .The Blickensderfer No. 8. . .



Our latest production and in its construction we have retained all of the best features that are contained in our earlier models, (No. 5 and 7) and have added further improvements, making it not only the best and most efficient typewriter we have ever produced, but even more durable than the former models, which are well known for their great strength and durability, outlasting many of the heavier built machines of other makes.

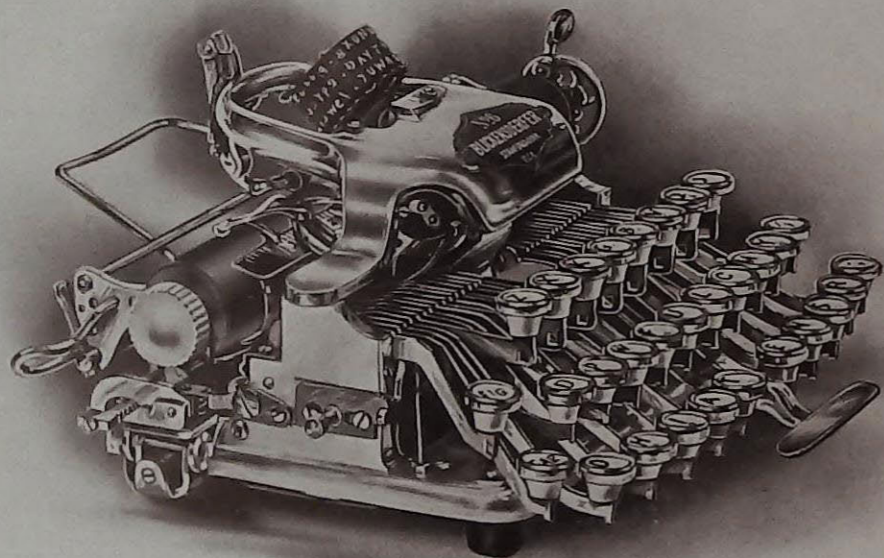
This model is a little heavier than the No. 7; is finer finished; has a separate space bar with a very light action. Around the entire key-board and spacer is a strong iron frame protecting the latter from injury or disarrangement. The top frame is heavier and made in two pieces, materially improving the action, strength and appearance of the machine. To this top frame is attached the decimal tabulator.

The No. 8 is made with the greatest care, no time or effort being spared to make it a perfect piece of mechanism. Each part is subjected to a searching inspection and only perfect parts allowed to enter into the construction of the typewriter. All the important wearing parts are made of the finest tool steel, hardened and ground to exact size. This means extra expense to the manufacturer but untold satisfaction to the user. We strongly recommend this model for heavy work and to all persons who desire a machine that will stand up under the most severe strain that a typewriter can be subjected to. It is especially convenient for making out bills, tabulating, etc., being equipped with a very simple and efficient decimal tabulator.

Aluminum Frame Machines

For the benefit of travelers (in order to reduce weight) we manufacture all models in aluminum at an advance of \$10.00 each.

No. 6 Blickensderfer



MADE IN ALUMINUM ONLY

Blickensderfer No. 6

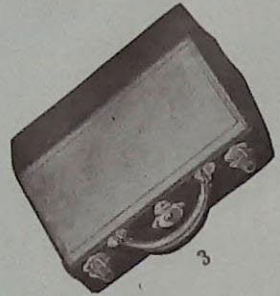


FOR years the public has been looking for a practical, low-priced, portable, key-board typewriter—one that equals any of the high priced machines in capacity and quality of work, and excels them in convenience. Such a typewriter is the Blickensderfer Aluminum No. 6.

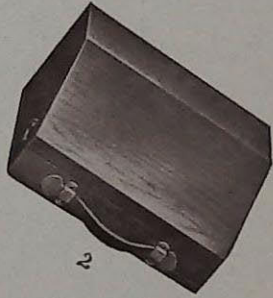
In speed and practical efficiency it is the equal of any typewriter of any other make now on the market, and excels them all in lightness of weight and beauty of finish.

This machine has been made with a view to meet the requirements of parties who travel and desire to have a machine with them that is light in weight (5 lbs.) and at the same time is as strong and durable as any of the heavy machines. It is also especially adapted for the private library or home use. In fact, it is a machine that stands alone in a class by itself and has only to be seen to be appreciated.

No. 5 Traveling Case



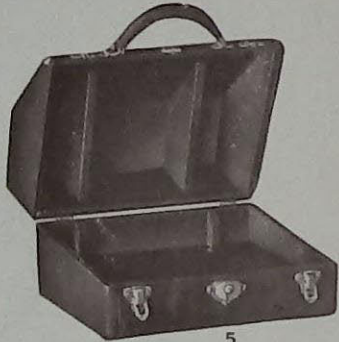
3



2



1



5



4

28

No. 7 Traveling Case



9



7



6



10



8

29

. . . Net Cash Prices . . .

BLICKENS DERFER No. 5, Scientific or Universal key-board, including two styles of type-wheels,	\$40.00
BLICKENS DERFER No. 7, Scientific or Universal key-board, including two styles of type-wheels,	50.00
BLICKENS DERFER No. 8, Scientific or Universal key-board, including two styles of type-wheels,	60.00
BLICKENS DERFER No. 7, with 12 or 14 inch carriage	55.00
BLICKENS DERFER No. 7, with 18 inch carriage	60.00
BLICKENS DERFER No. 8, with 12 or 14 inch carriage	65.00
BLICKENS DERFER No. 8, with 18 inch carriage	70.00
BLICKENS DERFER No. 6, Aluminum only	50.00

The above include 1 doz. ink rolls, 1 tool kit, packed in handsome oak carrying case

Extra Carriages { 9 1/4 inch	5.00
{ 12 and 14 inch	10.00
{ 18 inch	15.00
Leather Traveling Case for No. 5 (No. 3)	5.00
“ “ “ “ “ in two pieces (No. 1)	5.00
“ “ “ “ “ with pocket for stationery (No. 5)	7.50
“ “ “ “ “ square (No. 4)	5.00
“ “ “ “ “ 7 and No. 8 (No. 8)	6.00
“ “ “ “ “ square (No. 9)	8.00
“ “ “ “ “ with pocket for stationery (No. 7)	8.00
“ “ “ “ “ on bottom (No. 10)	10.00
“ “ “ “ “ sole leather with pocket for stationery	15.00

Ink Rolls, in all colors, per doz.75
Type-wheels, all styles, each	1.50
Carbon Paper, per doz.50

Full line Typewriter Paper always in Stock. Send for samples and price-list.
When machines are settled for by monthly payments an additional charge is made.

. . . Selling Agents . . .

The Blickensderfer Mfg. Co.	Atlanta, Ga., Fourth National Bank Building
“ “ “ “	Chicago, Ill., 83 Dearborn St.
“ “ “ “	Cincinnati, Ohio, 229 West 4th St.
“ “ “ “	Cleveland, Ohio, 265 The Arcade
“ “ “ “	Indianapolis, Ind., 136 E. Market St.
“ “ “ “	Minneapolis, Minn., 605 Sykes Block
“ “ “ “	New York City, 240 Broadway
“ “ “ “	Philadelphia, Pa., 709 Chestnut St.
“ “ “ “	Pittsburg, Pa., 211 Lewis Block
“ “ “ “	St. Louis, Mo., Wright Bldg., 8th & Pine Sts.
Bornemann Co., The G. C.	San Francisco, Cal., 467 Market St.
“ “ “ “	Oakland, Cal., N. W. Cor. 11th and Clay Sts.
Colorado Typewriter Exchange	Denver, Colo., 1627 Champa St.
Castleman, T. W.	New Orleans, La., 604 Canal, La. Bank Bldg.
Gould, S. G.	Kansas City, Mo., 106 East 8th St.
Harger & Blish	Dubuque, Iowa
Hibbard & Co., H. E.	Boston, Mass., 334 Boylston St.
Hayter Co., N. M.	Portland, Ore., 90-5th St.
Moore Co	Washington, D.C., 1420 New York Ave., N.W.
Nicholson, R. J.	Baltimore, Md., 14 St. Paul St.
Payne, T. H.	Chattanooga, Tenn., 823 Market St.
Pacific Typewriter & Supply Co.	Seattle, Wash., 322 New York Block
Snyder, W. H.	Columbus, Ohio, 338 N. High St.
Swanson Co., B. F.	Omaha, Neb., 1316 Farnam St.
Typewriter Supply Co.	Boise, Idaho, 109 South 10th St.
Utah Typewriter Exchange	Salt Lake City, Utah, 62 W. Second South St.
Wilson Co., Arthur G.	Los Angeles, Cal., 330 South Hill St.
Werner & Co., Richard	Dallas, Texas, 129 South Akard St.

Agencies in the Principal Foreign Cities

Assembly Dept. D

